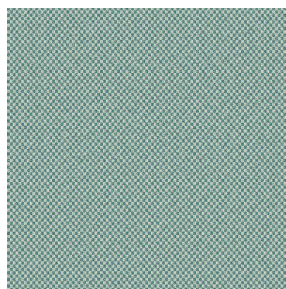
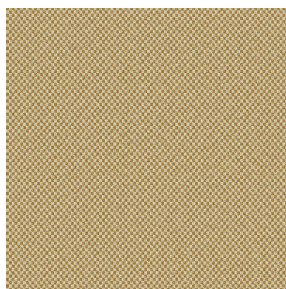


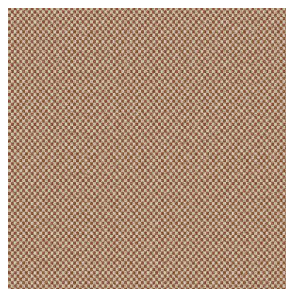
# SIENTO COLOR



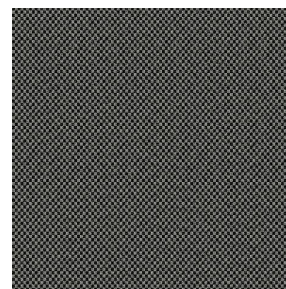
SIENTO COLOR Lagon  
110



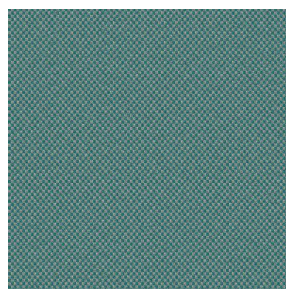
SIENTO COLOR Or 94



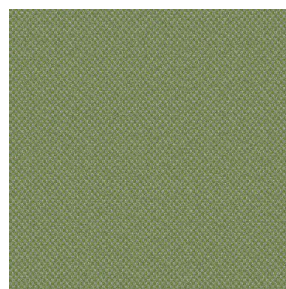
SIENTO COLOR  
Châtaigne 55



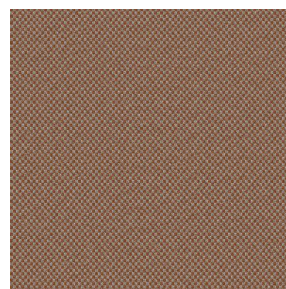
SIENTO COLOR  
Titanium 98



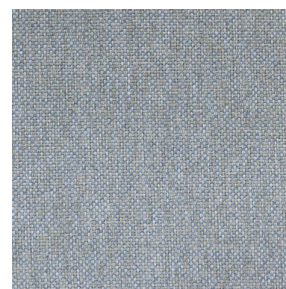
SIENTO COLOR Céladon  
135



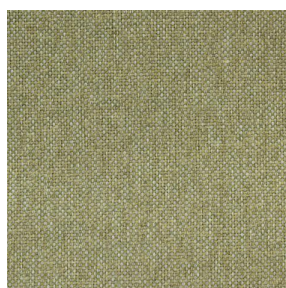
SIENTO COLOR Mousse  
92



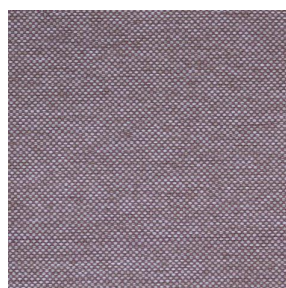
SIENTO COLOR Terre  
107



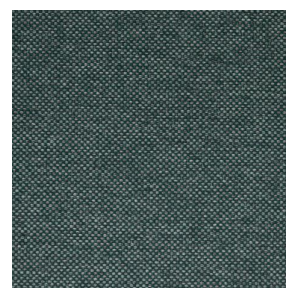
SIENTO COLOR Faïence  
149



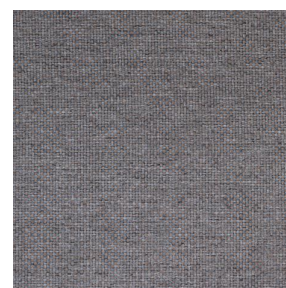
SIENTO COLOR Tilleul  
103



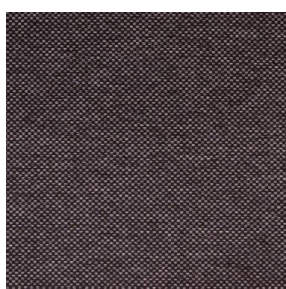
SIENTO COLOR  
Hortensia 134



SIENTO COLOR Sapin  
126



SIENTO COLOR Bronze  
13

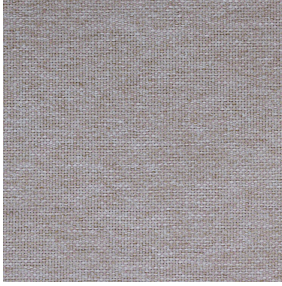


SIENTO COLOR Prune  
84



(Headquarters) SOTEXPRO - 510 route de Montchal - 42360 PANISSIÈRES - FRANCE - +33 4 77 27 60 60  
(Showroom) Le LAB' SOTEXPRO - 4 rue du Mail - 75002 PARIS - FRANCE

*Non-contractual photos and colors - Indicative fitting - Fitting may vary depending on support selected*



# SIENTO COLOR Lilas 19

Wool look heavy canvas, Siento Color is woven with coloured mixed dyed yarns which gives this textured chiné and coloured effect.

## Technical properties



Flame retardant




Recycled fabrics

**Applications** Cushions - Decorative frames - Roman blinds - Panel curtains -  
Bedspreads - Seating - Bed runners - Curtains

**Composition** 34% recycled polyester FR /66% polyester FR

**Weight** 370 g/m<sup>2</sup> **Width** 290 cm

**Fabric direction** Room high or standard direction **Fitting** ↔ cm ↓ cm

**Maintenance advice**     

**Labels** France Terre Textile (R016)

**Certifications** OEKO-TEX STANDARD 100 Recyclé (CQ 1006/2)

**Minimum order** 1 linear(s) meter(s)

## Technical characteristics

Flame retardant

M1 / B1 / IMO PASS

Acoustic

Noise reduction coefficient (NRC) : **0.71**

Weighted sound absorption coefficient (a<sub>w</sub>) : **0.60**

Acoustic absorption class (a<sub>w</sub>) : **C**

Resilience

Lightfastness (units Class/8) **6**

Pilling **4**

Dimensional Stability (%)

Warp **-2**

Weft **-1**

Martindale (Cycles) **90000**

Breaking Elongation

Warp **49**

Weft **44**

Breaking load (daN)

Warp **160**

Weft **210**



(Headquarters) SOTEXPRO - 510 route de Montchal - 42360 PANISSIÈRES - FRANCE - +33 4 77 27 60 60  
(Showroom) Le LAB' SOTEXPRO - 4 rue du Mail - 75002 PARIS - FRANCE

Non-contractual photos and colors - Indicative fitting - Fitting may vary depending on support selected