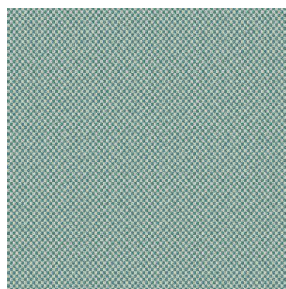
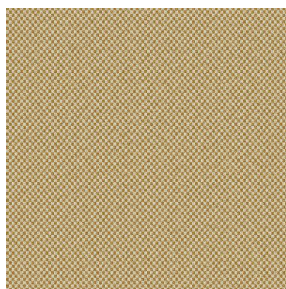


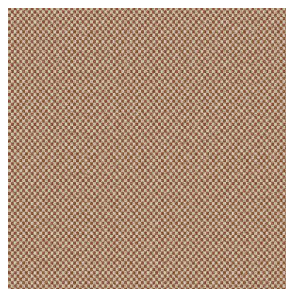
SIENTO COLOR



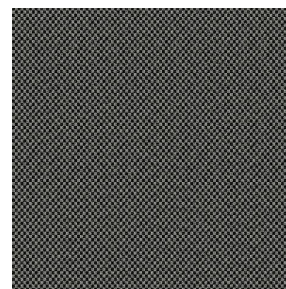
SIENTO COLOR Lagon
110



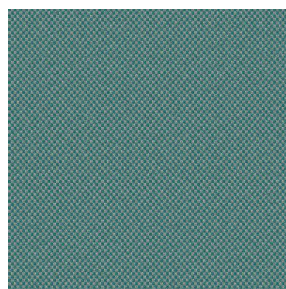
SIENTO COLOR Or 94



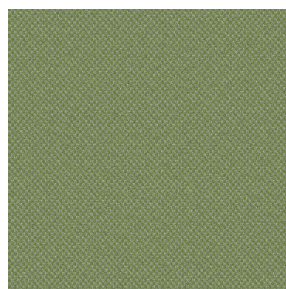
SIENTO COLOR
Châtaigne 55



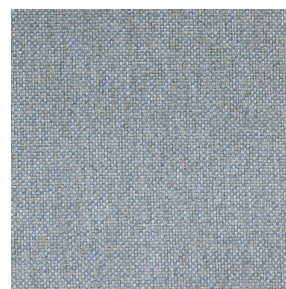
SIENTO COLOR
Titanium 98



SIENTO COLOR Céladon
135



SIENTO COLOR Mousse
92



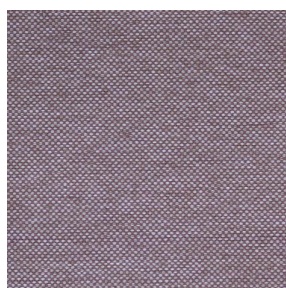
SIENTO COLOR Faïence
149



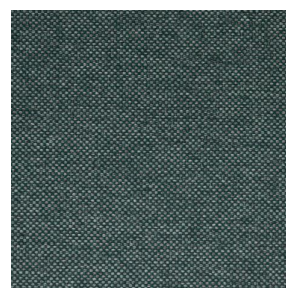
SIENTO COLOR Tilleul
103



SIENTO COLOR Lilas 19



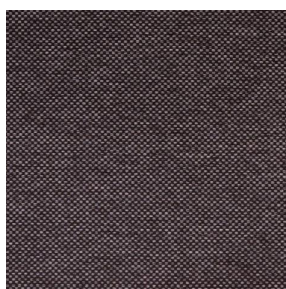
SIENTO COLOR
Hortensia 134



SIENTO COLOR Sapin
126



SIENTO COLOR Bronze
13

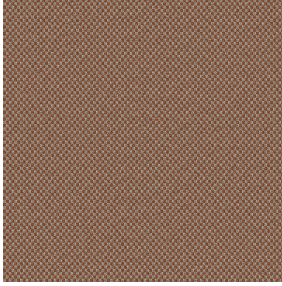


SIENTO COLOR Prune
84



(Headquarters) SOTEXPRO - 510 route de Montchal - 42360 PANISSIÈRES - FRANCE - +33 4 77 27 60 60
(Showroom) Le LAB' SOTEXPRO - 4 rue du Mail - 75002 PARIS - FRANCE

Non-contractual photos and colors - Indicative fitting - Fitting may vary depending on support selected



SIENTO COLOR Terre 107

Wool look heavy canvas, Siento Color is woven with coloured mixed dyed yarns which gives this textured chiné and coloured effect.

Technical properties



Flame retardant



Recycled fabrics

Applications Roman blinds - Panel curtains - Bedspreads - Seating - Bed runners - Curtains - Cushions - Decorative frames

Composition 34% recycled polyester FR /66% polyester FR

Weight 370 g/m² **Width** 290 cm

Fabric direction Room high or standard direction **Fitting** ↔ cm ↓ cm

Maintenance advice     

Labels France Terre Textile (R016)

Certifications OEKO-TEX STANDARD 100 Recyclé (CQ 1006/2)

Minimum order 1 linear(s) meter(s)

Technical characteristics

Flame retardant

M1 / B1 / IMO PASS

Acoustic

Noise reduction coefficient (NRC) : **0.71**

Weighted sound absorption coefficient (a_w) : **0.60**

Acoustic absorption class (a_w) : **C**

Resilience

Lightfastness (units Class/8) **6**

Pilling **4**

Dimensional Stability (%)

Warp **-2**

Weft **-1**

Martindale (Cycles) **90000**

Breaking Elongation

Warp **49**

Weft **44**

Breaking load (daN)

Warp **160**

Weft **210**



(Headquarters) SOTEXPRO - 510 route de Montchal - 42360 PANISSIÈRES - FRANCE - +33 4 77 27 60 60
(Showroom) Le LAB' SOTEXPRO - 4 rue du Mail - 75002 PARIS - FRANCE

Non-contractual photos and colors - Indicative fitting - Fitting may vary depending on support selected