

SIENTO LINA



SIENTO LINA Dune 170

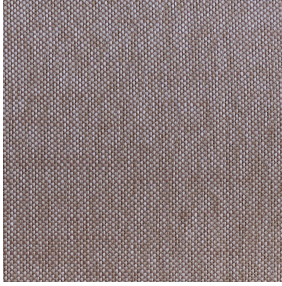


SIENTO LINA Savane
185



(Headquarters) SOTEXPRO - 510 route de Montchal - 42360 PANISSIÈRES - FRANCE - +33 4 77 27 60 60
(Showroom) Le LAB' SOTEXPRO - 4 rue du Mail - 75002 PARIS - FRANCE

Non-contractual photos and colors - Indicative fitting - Fitting may vary depending on support selected



SIENTO LINA Muscade 175

Heavy linen look canvas, Siento Lina is woven with mixed dyed yarns which gives this textured chiné effect.

Technical properties



Flame retardant



Recycled fabrics

Applications Roman blinds - Panel curtains - Curtains - Decorative frames

Composition 47% recycled polyester FR / 53% polyester FR

Weight 380 g/m² **Width** 290 cm

Fabric direction Room High Direction **Fitting** ↔ cm ↓ cm

Maintenance advice     

Labels France Terre Textile (R016)

Certifications OEKO-TEX STANDARD 100 Recyclé (CQ 1006/2)

Minimum order 1 linear(s) meter(s)

Technical characteristics

Flame retardant	M1 / B1 / IMO PASS / UNI 8456 / 9174 Classe Uno	
Acoustic	Noise reduction coefficient (NRC) :	0.61
	Weighted sound absorption coefficient (a _w) :	0.50
	Acoustic absorption class (a _w) :	D
Optical index	Light reflexion :	25 %
	Light absorption :	65 %
	Light transmission :	10 %
Thermal index	Solar reflexion :	45 %
	Solar absorption :	36 %
	Solar transmission :	19 %
	UV transmission :	8 %
	Gtot :	Gt 42 % Fc 72 %
Resilience	Lightfastness (units Class/8)	6
	Pilling	1
	Dimensional Stability (%)	
	Warp	-0,5
	Weft	-1,5
	Martindale (Cycles)	60000
	Breaking Elongation	
	Warp	49
	Weft	24
	Breaking load (daN)	
	Warp	170
Weft	210	



(Headquarters) SOTEXPRO - 510 route de Montchal - 42360 PANISSIÈRES - FRANCE - +33 4 77 27 60 60
(Showroom) Le LAB' SOTEXPRO - 4 rue du Mail - 75002 PARIS - FRANCE

Non-contractual photos and colors - Indicative fitting - Fitting may vary depending on supports selected