

SIENTO LITO



SIENTO LITO Minéral
157



SIENTO LITO Poireau
162



SIENTO LITO Lichen 156



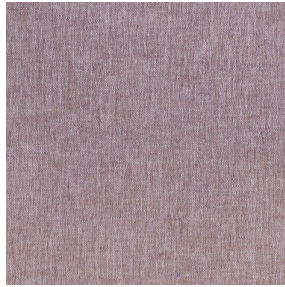
SIENTO LITO Brousse
192



SIENTO LITO Sahara
169



SIENTO LITO Lin 11



SIENTO LITO Hortensia
134



(Headquarters) SOTEXPRO - 510 route de Montchal - 42360 PANISSIÈRES - FRANCE - +33 4 77 27 60 60
(Showroom) Le LAB' SOTEXPRO - 4 rue du Mail - 75002 PARIS - FRANCE

Non-contractual photos and colors - Indicative fitting - Fitting may vary depending on support selected



SIENTO LITO Cordage 172

Light-filtering fabric made from recycled yarns

Technical properties



Flame retardant



Recycled fabrics

Applications Roman blinds - Panel curtains - Curtains - Decorative frames

Composition 80% recycled polyester FR / 20% polyester FR

Weight 330 g/m² **Width** 290 cm

Fabric direction Standard Direction **Fitting** ↔ cm ↓ cm

Maintenance advice     

Labels France Terre Textile (R016)

Certifications OEKO-TEX STANDARD 100 Recyclé (CQ 1006/2)

Minimum order 1 linear(s) meter(s)

Technical characteristics

Flame retardant	M1 / B1 / IMO PASS / UNI 8456 / 9174 Classe Uno
Acoustic	Noise reduction coefficient (NRC) : 0.76
	Weighted sound absorption coefficient (a _w) : 0.70
	Acoustic absorption class (a _w) : C
Optical index	Light reflexion : 48 %
	Light absorption : 41 %
	Light transmission : 11 %
Thermal index	Solar reflexion : 55 %
	Solar absorption : 25 %
	Solar transmission : 20 %
	UV transmission : 2 %
	Gtot : Gt 39 % Fc 67 %
Resilience	Lightfastness (units Class/8) 5
	Pilling 1
	Dimensional Stability (%)
	Warp -1
	Weft -0.5
	Martindale (Cycles) 20000
	Breaking Elongation
	Warp 49
	Weft 34
	Breaking load (daN)
	Warp 140
	Weft 79



(Headquarters) SOTEXPRO - 510 route de Montchal - 42360 PANISSIÈRES - FRANCE - +33 4 77 27 60 60
(Showroom) Le LAB' SOTEXPRO - 4 rue du Mail - 75002 PARIS - FRANCE

Non-contractual photos and colors - Indicative fitting - Fitting may vary depending on supports selected