

SIENTO LITO



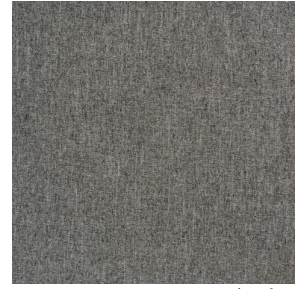
SIENTO LITO Girofle
186



SIENTO LITO Souris 31



SIENTO LITO Taupe 95



SIENTO LITO Minéral
157



SIENTO LITO Cachou
159



SIENTO LITO Poivre 181



SIENTO LITO Sapin 126



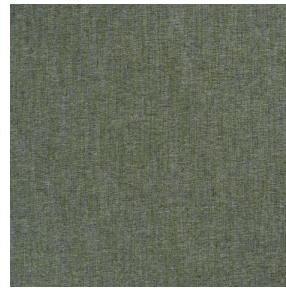
SIENTO LITO Poireau
162



SIENTO LITO Lichen 156



SIENTO LITO Cuivre 50



SIENTO LITO Lierre 124



SIENTO LITO Brousse
192



SIENTO LITO Cordage
172



SIENTO LITO Sahara
169



SIENTO LITO Lin 11



SIENTO LITO Hortensia
134



SIENTO LITO Lilas 19



(Headquarters) SOTEXPRO - 510 route de Montchal - 42360 PANISSIÈRES - FRANCE - +33 4 77 27 60 60

Non-contractual photos and colors - Indicative fitting - Fitting may vary depending on support selected



SIENTO LITO Kaki 148

Light-filtering fabric made from recycled yarns . The proportion of recycled material and the manufacturing process of the yarn used to weave this quality can cause slight color variations between different batches of fabric.

Technical properties



Flame retardant



Recycled fabrics

Applications Roman blinds - Panel curtains - Curtains - Decorative frames

Composition 100% FR polyester including 90% recycled material

Weight 335 g/m² **Width** 280 cm

Fabric direction Room High Direction **Fitting** ↔ cm ↓ cm

Maintenance advice    

Labels France Terre Textile (R016)

Certifications OEKO-TEX STANDARD 100 Recyclé (CQ 1006/2)

Minimum order 1 linear(s) meter(s)

Technical characteristics

| | |
|-----------------|---|
| Flame retardant | M1 / B1 / IMO PASS / UNI 8456 / 9174 Classe Uno |
| Acoustic | Noise reduction coefficient (NRC) : 0.76 |
| | Weighted sound absorption coefficient (a _w) : 0.70 |
| | Acoustic absorption class (a _w) : C |
| Optical index | Light reflexion : 25 % |
| | Light absorption : 71 % |
| | Light transmission : 4 % |
| Thermal index | Solar reflexion : 41 % |
| | Solar absorption : 45 % |
| | Solar transmission : 14 % |
| | UV transmission : 2 % |
| | Gtot : Gt 44 % Fc 74 % |
| Resilience | Lightfastness (units Class/8) 5 |
| | Pilling 1 |
| | Dimensional Stability (%) |
| | Warp -1 |
| | Weft -0.5 |
| | Martindale (Cycles) 20000 |
| | Breaking Elongation |
| | Warp 49 |
| | Weft 34 |
| | Breaking load (daN) |
| | Warp 140 |
| Weft 79 | |



(Headquarters) SOTEXPRO - 510 route de Montchal - 42360 PANISSIÈRES - FRANCE - +33 4 77 27 60 60

Non-contractual photos and colors - Indicative fitting - Fitting may vary depending on support selected