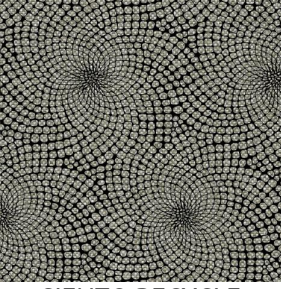


SIENTO RECYCLE DESSIN 2174 SOLEIL

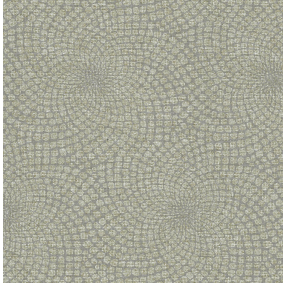


SIENTO RECYCLE
DESSIN 2174 SOLEIL
Noir 10



(Headquarters) SOTEXPRO - 510 route de Montchal - 42360 PANISSIÈRES - FRANCE - +33 4 77 27 60 60
(Showroom) Le LAB' SOTEXPRO - 4 rue du Mail - 75002 PARIS - FRANCE

Non-contractual photos and colors - Indicative fitting - Fitting may vary depending on support selected



SIENTO RECYCLE DESSIN 2174 SOLEIL Lin 11

Technical properties



Flame retardant

Applications Roman blinds - Panel curtains - Curtains

Composition 100% FR polyester including 95% recycled material

Weight 370 g/m² Width 140 cm

Fabric direction Room high or standard direction Fitting → 20.0 cm ↑ 30.0 cm

Maintenance advice     

Labels France Terre Textile (R016)

Certifications OEKO-TEX STANDARD 100 (CQ 1006/1)

Minimum order 25 linear(s) meter(s)

Technical characteristics

Flame retardant	M1 / IMO PASS	
Acoustic	Noise reduction coefficient (NRC) :	0.73
	Weighted sound absorption coefficient (a _w) :	0.65
	Acoustic absorption class (a _w) :	C
Resilience	Lightfastness (units Class/8)	5
	Pilling	4-5
	Dimensional Stability (%)	
	Warp	-2
	Weft	-1
	Martindale (Cycles)	50000
	Breaking Elongation	
	Warp	27
	Weft	22
	Breaking load (daN)	
	Warp	110
Weft	100	



(Headquarters) SOTEXPRO - 510 route de Montchal - 42360 PANISSIÈRES - FRANCE - +33 4 77 27 60 60
(Showroom) Le LAB' SOTEXPRO - 4 rue du Mail - 75002 PARIS - FRANCE

Non-contractual photos and colors - Indicative fitting - Fitting may vary depending on support selected