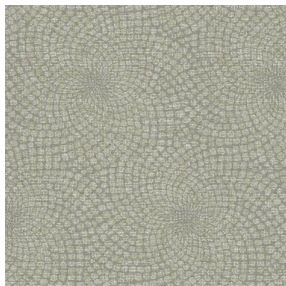


# SIENTO RECYCLE DESSIN 2174 SOLEIL

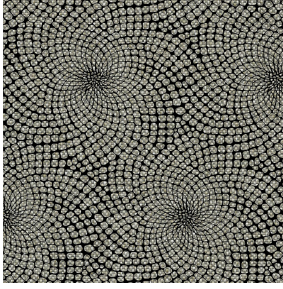


SIENTO RECYCLE  
DESSIN 2174 SOLEIL Lin  
11



(Headquarters) SOTEXPRO - 510 route de Montchal - 42360 PANISSIÈRES - FRANCE - +33 4 77 27 60 60  
(Showroom) Le LAB' SOTEXPRO - 4 rue du Mail - 75002 PARIS - FRANCE

Non-contractual photos and colors - Indicative fitting - Fitting may vary depending on support selected



# SIENTO RECYCLE DESSIN 2174 SOLEIL Noir 10

## Technical properties








Flame retardant

Applications Roman blinds - Panel curtains - Curtains

Composition 80% recycled polyester FR / 20% polyester FR

Weight 330 g/m<sup>2</sup> Width 140 cm

Fabric direction Room high or standard direction Fitting → 20.0 cm ↑ 30.0 cm

Maintenance advice     

Labels France Terre Textile (R016)

Certifications OEKO-TEX STANDARD 100 (CQ 1006/1)

Minimum order 25 linear(s) meter(s)

## Technical characteristics

Flame retardant	M1 / IMO PASS	
Acoustic	Noise reduction coefficient (NRC) :	<b>0.73</b>
	Weighted sound absorption coefficient (a <sub>w</sub> ) :	<b>0.65</b>
	Acoustic absorption class (a <sub>w</sub> ) :	<b>C</b>
Resilience	Lightfastness (units Class/8)	<b>5</b>
	Pilling	<b>4-5</b>
	Dimensional Stability (%)	
	Warp	<b>-2</b>
	Weft	<b>-1</b>
	Martindale (Cycles)	<b>50000</b>
	Breaking Elongation	
	Warp	<b>27</b>
	Weft	<b>22</b>
	Breaking load (daN)	
	Warp	<b>110</b>
Weft	<b>100</b>	



(Headquarters) SOTEXPRO - 510 route de Montchal - 42360 PANISSIÈRES - FRANCE - +33 4 77 27 60 60  
(Showroom) Le LAB' SOTEXPRO - 4 rue du Mail - 75002 PARIS - FRANCE

Non-contractual photos and colors - Indicative fitting - Fitting may vary depending on support selected