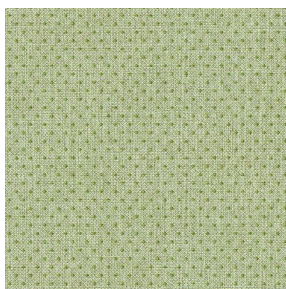
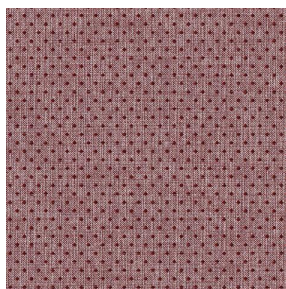


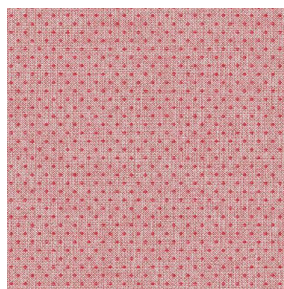
# SIENTO RECYCLE DESSIN 2206 TIM



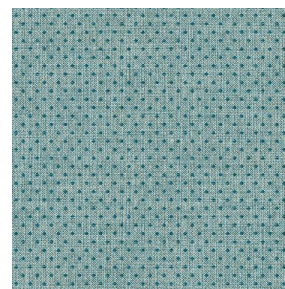
SIENTO RECYCLE  
DESSIN 2206 TIM Tilleul  
102



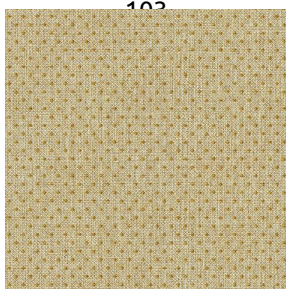
SIENTO RECYCLE  
DESSIN 2206 TIM  
Chaudron 118



SIENTO RECYCLE  
DESSIN 2206 TIM  
Orange 15



SIENTO RECYCLE  
DESSIN 2206 TIM Bleu  
41

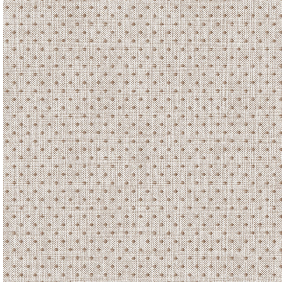


SIENTO RECYCLE  
DESSIN 2206 TIM Or 94



(Headquarters) SOTEXPRO - 510 route de Montchal - 42360 PANISSIÈRES - FRANCE - +33 4 77 27 60 60

Non-contractual photos and colors - Indicative fitting - Fitting may vary depending on support selected



# SIENTO RECYCLE DESSIN 2206 TIM Beige 63

Our new quality produced in France, 100% recycled, opens the way to developments more in line with our environmental responsibility.

## Technical properties



Flame retardant



Thermal



Acoustic



Recycled fabrics

Applications Roman blinds - Panel curtains - Curtains

Composition 100% FR polyester including 95% recycled material

Weight 370 g/m<sup>2</sup> Width 280 cm

Fabric direction Room high or standard direction Fitting ↔ cm ↓ cm

Maintenance advice     

Labels France Terre Textile (R016)

Certifications OEKO-TEX STANDARD 100 Recyclé (CQ 1006/2)

Minimum order 1 linear(s) meter(s)

## Technical characteristics

Flame retardant

M1 / B1 / IMO PASS / UNI 8456 / 9174 Classe Uno

Acoustic

Noise reduction coefficient (NRC) : **0.73**

Weighted sound absorption coefficient (a<sub>w</sub>) : **0.65**

Acoustic absorption class (a<sub>w</sub>) : **C**

Resilience

Dimensional Stability (%)

Warp **-1,5**

Weft **-1,5**

Breaking Elongation

Warp **41**

Weft **44**

Breaking load (daN)

Warp **180**

Weft **150**



(Headquarters) SOTEXPRO - 510 route de Montchal - 42360 PANISSIÈRES - FRANCE - +33 4 77 27 60 60

Non-contractual photos and colors - Indicative fitting - Fitting may vary depending on support selected