

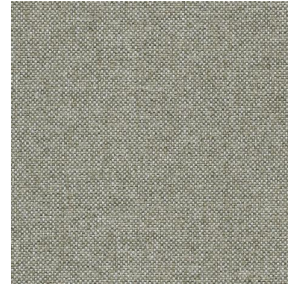
# SIENTO RECYCLE UNI



SIENTO RECYCLE UNI  
Naturel 26



SIENTO RECYCLE UNI  
Lin 11



SIENTO RECYCLE UNI  
Ficelle 09



(Headquarters) SOTEXPRO - 510 route de Montchal - 42360 PANISSIÈRES - FRANCE - +33 4 77 27 60 60  
(Showroom) Le LAB' SOTEXPRO - 4 rue du Mail - 75002 PARIS - FRANCE

Non-contractual photos and colors - Indicative fitting - Fitting may vary depending on support selected



# SIENTO RECYCLE UNI Acier

## 18

Heavy canvas fabric, the Siento recyclé is woven with mixed dyed yarns which gives this textured linen effect. The warp and weft are made with recycled polyester yarns.

### Technical properties



Flame retardant



Thermal



Acoustic



Recycled fabrics

**Applications** Roman blinds - Panel curtains - Bedspreads - Valences - Seating - Bed runners - Curtains - Cushions

**Composition** 80% recycled polyester FR / 20% polyester FR

**Weight** 330 g/m<sup>2</sup> **Width** 290 cm

**Fabric direction** Room high or standard direction **Fitting** ↔ cm ↓ cm

**Maintenance advice**     

**Labels** France Terre Textile (R016)

**Certifications** OEKO-TEX STANDARD 100 Recyclé (CQ 1006/2)

**Minimum order** 1 linear(s) meter(s)



## Technical characteristics

Flame retardant	M1 / B1 / IMO PASS / UNI 8456 / 9174 Classe Uno
Acoustic	Noise reduction coefficient (NRC) : <b>0.73</b> Weighted sound absorption coefficient (a <sub>w</sub> ) : <b>0.65</b> Acoustic absorption class (a <sub>w</sub> ) : <b>C</b>
Optical index	Light reflexion : <b>52 %</b> Light absorption : <b>40 %</b> Light transmission : <b>8 %</b>
Thermal index	Solar reflexion : <b>61 %</b> Solar absorption : <b>24 %</b> Solar transmission : <b>15 %</b> UV transmission : <b>3 %</b> Gtot : <b>Gt 37 % Fc 63 %</b>
Resilience	Lightfastness (units Class/8) <b>6</b> Pilling <b>4-5</b> Dimensional Stability (%) Warp <b>-1,5</b> Weft <b>-1,5</b> Martindale (Cycles) <b>90000</b> Breaking Elongation Warp <b>41</b> Weft <b>44</b> Breaking load (daN) Warp <b>180</b> Weft <b>150</b>



(Headquarters) SOTEXPRO - 510 route de Montchal - 42360 PANISSIÈRES - FRANCE - +33 4 77 27 60 60  
(Showroom) Le LAB' SOTEXPRO - 4 rue du Mail - 75002 PARIS - FRANCE

Non-contractual photos and colors - Indicative fitting - Fitting may vary depending on support selected