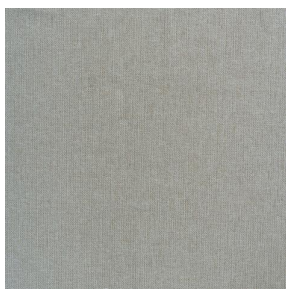
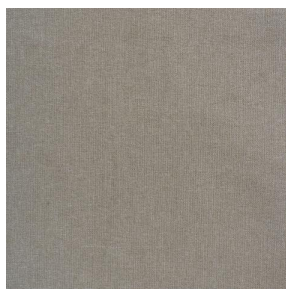


# SIENTO WOODY



SIENTO WOODY Ivoire  
115

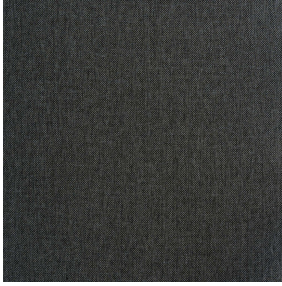


SIENTO WOODY Osier  
171



(Headquarters) SOTEXPRO - 510 route de Montchal - 42360 PANISSIÈRES - FRANCE - +33 4 77 27 60 60

*Non-contractual photos and colors - Indicative fitting - Fitting may vary depending on support selected*



# SIENTO WOODY Poivre 181

Heavy chenille canvas, Siento Woody is woven with mixed dyed yarns which gives this textured chiné effect. The chenille weft gives a very pleasant and soft sense of touch. The proportion of recycled material and the manufacturing process of the yarn used to weave this quality can cause slight color variations between different batches of fabric

## Technical properties



Flame retardant



Recycled fabrics

Applications Roman blinds - Panel curtains - Curtains - Decorative frames

Composition 100% FR polyester including 90% recycled material

Weight 350 g/m<sup>2</sup> Width 280 cm

Fabric direction Room High Direction Fitting ↔ cm ↓ cm

Maintenance advice     

Labels France Terre Textile (R016)

Certifications OEKO-TEX STANDARD 100 Recyclé (CQ 1006/2)

Minimum order 1 linear(s) meter(s)

## Technical characteristics

Flame retardant	M1
Acoustic	Noise reduction coefficient (NRC) : <b>0.74</b> Weighted sound absorption coefficient (a <sub>w</sub> ) : <b>0.65</b> Acoustic absorption class (a <sub>w</sub> ) : <b>C</b>
Resilience	Lightfastness (units Class/8) <b>6</b> Pilling <b>2</b> Dimensional Stability (%) Warp <b>-0,5</b> Weft <b>-1</b> Martindale (Cycles) <b>12000</b> Breaking Elongation Warp <b>48</b> Weft <b>24</b> Breaking load (daN) Warp <b>180</b> Weft <b>52</b>



(Headquarters) SOTEXPRO - 510 route de Montchal - 42360 PANISSIÈRES - FRANCE - +33 4 77 27 60 60

Non-contractual photos and colors - Indicative fitting - Fitting may vary depending on supports selected