



3141 bpi 00
Printing support



ODE Lilas 19
Print pattern



Printing support 3141 bpi 00 Print pattern ODE Lilas 19

Sheer fabric support for digital printing.

Technical properties



Flame retardant Transparent

Applications Roman blinds - Panel curtains - Curtains

Composition polyester/polyester FR

Weight 50 g/m²

Width 290 cm

Fabric direction Room High Direction

Fitting ↔ 50.0 cm ↓ 50.0 cm

Maintenance advice     

Label France Terre Textile / OEKO-TEX STANDARD 100

Minimum order 25 linear(s) meter(s)

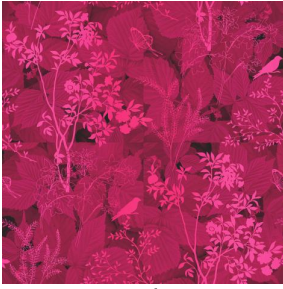


Visual not taking into account the printing medium, the final rendering may vary according to the chosen medium.

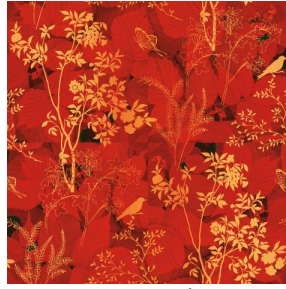
Technical characteristics

Flame retardant	M1 / B1 / IMO PASS	
Optical index	Light reflexion :	25 %
	Light absorption :	4 %
	Light transmission :	71 %
Transparent veil	Yes	
Thermal index	Solar reflexion :	25 %
	Solar absorption :	3 %
	Solar transmission :	72 %
	UV transmission :	65 %
	Gtot :	Gt 50 % Fc 85 %
Resilience	Lightfastness (units Class/8)	6
	Dimensional Stability (%)	
	Warp	-1
	Weft	0
	Breaking Elongation	
	Warp	28
	Weft	34
	Breaking load (daN)	
	Warp	30
Weft	36	

Print pattern ODE



ODE Fuchsia 33



ODE Corail 14



ODE Bleu 41



ODE Turquoise 53



(Headquarters) SOTEXPRO - 510 route de Montchal - 42360 PANISSIÈRES - FRANCE - +33 4 77 27 60 60
(Showroom) Le LAB' SOTEXPRO - 4 rue du Mail - 75002 PARIS - FRANCE

Non-contractual photos and colors - Indicative fitting - Fitting may vary depending on support selected