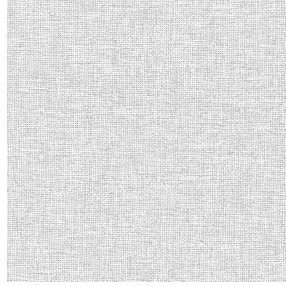




**3141 bpi 00**  
Printing support



**MUNA gris 97**  
Print pattern

## Printing support **3141 bpi 00** Print pattern **MUNA gris 97**

Sheer fabric support for digital printing.

### Technical properties



Flame retardant    Transparent

**Applications** Roman blinds - Panel curtains - Curtains


**Composition** polyester/polyester FR

**Weight** 50 g/m<sup>2</sup>

**Width** 290 cm

**Fabric direction** Room High Direction

**Fitting** ↔ cm ↓ cm

**Maintenance advice**     

**Label** France Terre Textile / OEKO-TEX STANDARD 100

**Minimum order** 25 linear(s) meter(s)



Visual not taking into account the printing medium, the final rendering may vary according to the chosen medium.

## Technical characteristics

|                  |                               |                 |
|------------------|-------------------------------|-----------------|
| Flame retardant  | M1 / B1 / IMO PASS            |                 |
| Optical index    | Light reflexion :             | 25 %            |
|                  | Light absorption :            | 4 %             |
|                  | Light transmission :          | 71 %            |
| Transparent veil | Yes                           |                 |
| Thermal index    | Solar reflexion :             | 25 %            |
|                  | Solar absorption :            | 3 %             |
|                  | Solar transmission :          | 72 %            |
|                  | UV transmission :             | 65 %            |
|                  | Gtot :                        | Gt 50 % Fc 85 % |
| Resilience       | Lightfastness (units Class/8) | 6               |
|                  | Dimensional Stability (%)     |                 |
|                  | Warp                          | -1              |
|                  | Weft                          | 0               |
|                  | Breaking Elongation           |                 |
|                  | Warp                          | 28              |
|                  | Weft                          | 34              |
|                  | Breaking load (daN)           |                 |
|                  | Warp                          | 30              |
| Weft             | 36                            |                 |

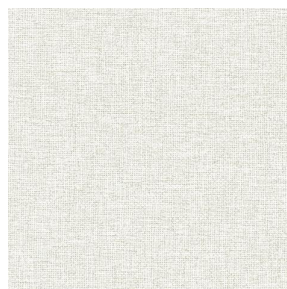
# Print pattern MUNA



MUNA Cactus 36



MUNA soleil 90



MUNA lin 11



MUNA Melon 22



MUNA souris 31



MUNA lagon 110



MUNA jade 116



MUNA terre 107



MUNA céladon 135



MUNA Coco 142



MUNA Sable 67



MUNA Saumon 143



MUNA Sisal 140



MUNA Tourterelle 138



MUNA Ardoise 87



MUNA Tilleul 103



MUNA Chanvre 72



MUNA Graphite 77



MUNA Olive 61



MUNA Lierre 124



(Headquarters) SOTEXPRO - 510 route de Montchal - 42360 PANISSIÈRES - FRANCE - +33 4 77 27 60 60  
(Showroom) Le LAB' SOTEXPRO - 4 rue du Mail - 75002 PARIS - FRANCE

Non-contractual photos and colors - Indicative fitting - Fitting may vary depending on support selected



# Print pattern MUNA



MUNA Indigo 144



MUNA Sienne 29



MUNA Rouge 21



MUNA Saphir 106



MUNA Violine 105



MUNA Titanium 98



MUNA Acier 18



(Headquarters) SOTEXPRO - 510 route de Montchal - 42360 PANISSIÈRES - FRANCE - +33 4 77 27 60 60  
(Showroom) Le LAB' SOTEXPRO - 4 rue du Mail - 75002 PARIS - FRANCE

*Non-contractual photos and colors - Indicative fitting - Fitting may vary depending on support selected*