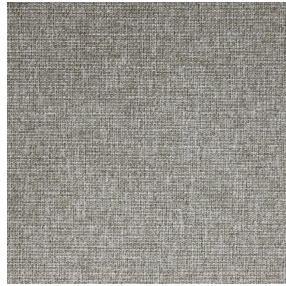




**3141 bpi 00**  
Printing support



**MUNA Chanvre 72**  
Print pattern



## Printing support **3141 bpi 00** Print pattern **MUNA Chanvre 72**

Sheer fabric support for digital printing.

### Technical properties



Flame retardant



Transparent

**Applications** Roman blinds - Panel curtains - Curtains

**Composition** polyester/polyester FR

**Weight** 50 g/m<sup>2</sup>

**Width** 290 cm

**Fabric direction** Room High Direction

**Fitting** ↔ cm ↓ cm

**Maintenance advice**     

**Label** France Terre Textile / OEKO-TEX STANDARD 100

**Minimum order** 25 linear(s) meter(s)



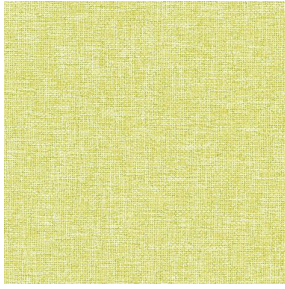
Visual not taking into account the printing medium, the final rendering may vary according to the chosen medium.

## Technical characteristics

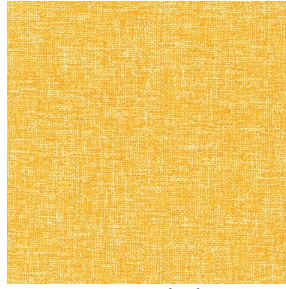
|                  |                               |                 |
|------------------|-------------------------------|-----------------|
| Flame retardant  | M1 / B1 / IMO PASS            |                 |
| Optical index    | Light reflexion :             | 25 %            |
|                  | Light absorption :            | 4 %             |
|                  | Light transmission :          | 71 %            |
| Transparent veil | Yes                           |                 |
| Thermal index    | Solar reflexion :             | 25 %            |
|                  | Solar absorption :            | 3 %             |
|                  | Solar transmission :          | 72 %            |
|                  | UV transmission :             | 65 %            |
|                  | Gtot :                        | Gt 50 % Fc 85 % |
| Resilience       | Lightfastness (units Class/8) | 6               |
|                  | Dimentional Stability (%)     |                 |
|                  | Warp                          | -1              |
|                  | Weft                          | 0               |
|                  | Breaking Elongation           |                 |
|                  | Warp                          | 28              |
|                  | Weft                          | 34              |
|                  | Breaking load (daN)           |                 |
|                  | Warp                          | 30              |
|                  | Weft                          | 36              |



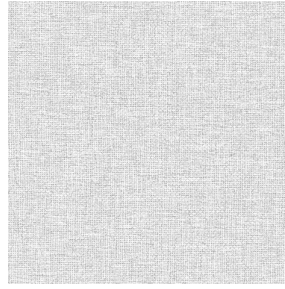
## Print pattern MUNA



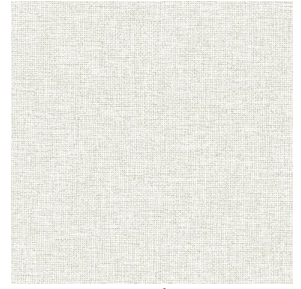
MUNA Cactus 36



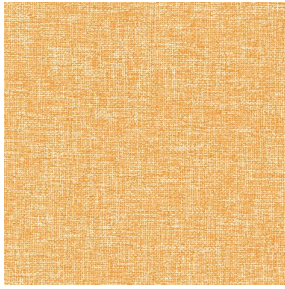
MUNA soleil 90



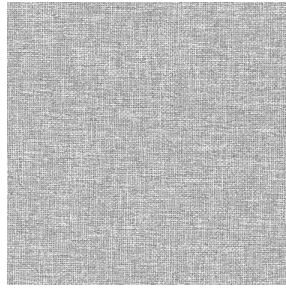
MUNA gris 97



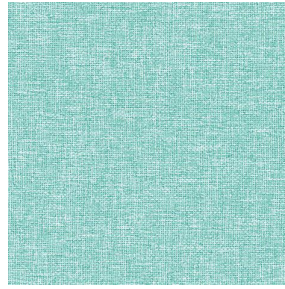
MUNA lin 11



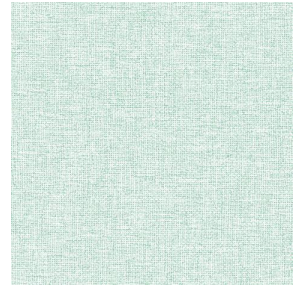
MUNA Melon 22



MUNA souris 31



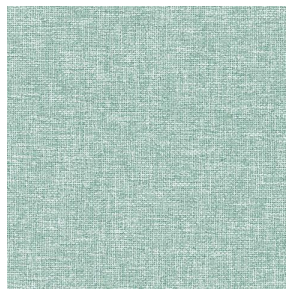
MUNA lagon 110



MUNA jade 116



MUNA terre 107



MUNA céladon 135



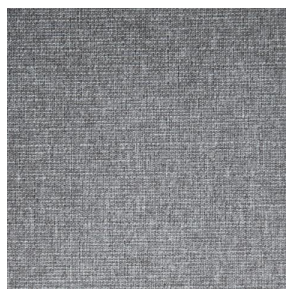
MUNA Coco 142



MUNA Sable 67



MUNA Saumon 143



MUNA Sisal 140



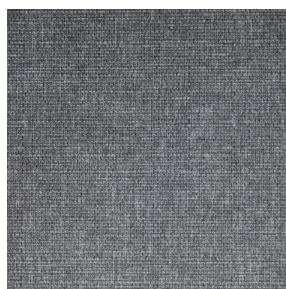
MUNA Tourterelle 138



MUNA Ardoise 87



MUNA Tilleul 103



MUNA Graphite 77



MUNA Olive 61



MUNA Lierre 124



(Headquarters) SOTEXPRO - 510 route de Montchal - 42360 PANISSIÈRES - FRANCE - +33 4 77 27 60 60  
(Showroom) Le LAB' SOTEXPRO - 4 rue du Mail - 75002 PARIS - FRANCE

Non-contractual photos and colors - Indicative fitting - Fitting may vary depending on support selected



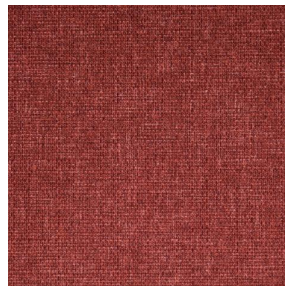
## Print pattern MUNA



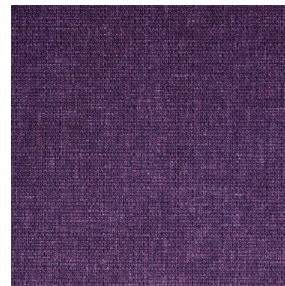
MUNA Indigo 144



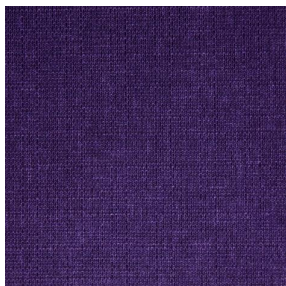
MUNA Sienne 29



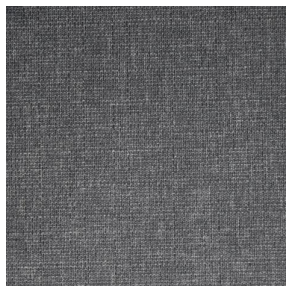
MUNA Rouge 21



MUNA Saphir 106



MUNA Violine 105



MUNA Titanium 98



MUNA Acier 18



(Headquarters) SOTEXPRO - 510 route de Montchal - 42360 PANISSIÈRES - FRANCE - +33 4 77 27 60 60  
(Showroom) Le LAB' SOTEXPRO - 4 rue du Mail - 75002 PARIS - FRANCE

Non-contractual photos and colors - Indicative fitting - Fitting may vary depending on support selected