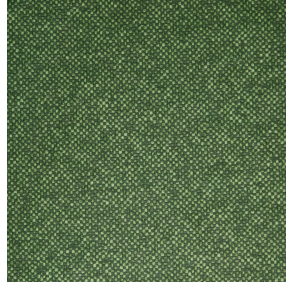




3141 bpi 00  
Printing support



ANATOLE mousse 92  
Print pattern



# Printing support 3141 bpi 00 Print pattern ANATOLE mousse 92

Sheer fabric support for digital printing.

## Technical properties



Flame retardant    Transparent

Applications Roman blinds - Panel curtains - Curtains

Composition polyester/polyester FR

Weight 50 g/m<sup>2</sup>

Width 290 cm

Fabric direction Room High Direction

Fitting ↔ cm ↓ cm

Maintenance advice

Label France Terre Textile / OEKO-TEX STANDARD 100

Minimum order 25 linear(s) meter(s)



Visual not taking into account the printing medium, the final rendering may vary according to the chosen medium.

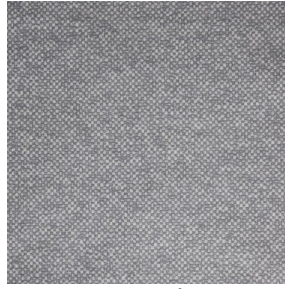
## Technical characteristics

Flame retardant	M1 / B1 / IMO PASS
Optical index	Light reflexion : 25 %
	Light absorption : 4 %
	Light transmission : 71 %
Transparent veil	Yes
Thermal index	Solar reflexion : 25 %
	Solar absorption : 3 %
	Solar transmission : 72 %
	UV transmission : 65 %
	Gtot : Gt 50 % Fc 85 %
Resilience	Lightfastness (units Class/8) 6
	Dimensional Stability (%)
	Warp -1
	Weft 0
	Breaking Elongation
	Warp 28
	Weft 34
	Breaking load (daN)
	Warp 30
Weft 36	

# Print pattern ANATOLE



ANATOLE Naturel 26



ANATOLE lin 11



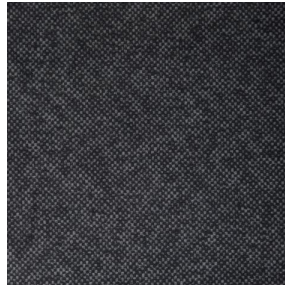
ANATOLE Ficelle 09



ANATOLE Celadon 135



ANATOLE Océan 91



ANATOLE Titanium 98



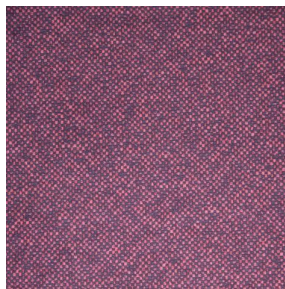
ANATOLE Cactus 36



ANATOLE Or 94



ANATOLE Chaudron  
118



ANATOLE Amarante  
108



ANATOLE Taupe 95



(Headquarters) SOTEXPRO - 510 route de Montchal - 42360 PANISSIÈRES - FRANCE - +33 4 77 27 60 60  
(Showroom) Le LAB' SOTEXPRO - 4 rue du Mail - 75002 PARIS - FRANCE

*Non-contractual photos and colors - Indicative fitting - Fitting may vary depending on support selected*