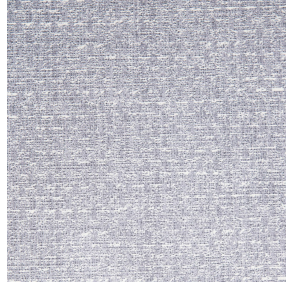




3141 bpi 00  
Printing support



RUSTIC Lin 11  
Print pattern



# Printing support 3141 bpi 00 Print pattern RUSTIC Lin 11

Sheer fabric support for digital printing.

## Technical properties



Flame retardant Transparent

Applications Roman blinds - Panel curtains - Curtains




Composition polyester/polyester FR

Weight 50 g/m<sup>2</sup>

Width 290 cm

Fabric direction Room High Direction

Fitting ↔ cm ↓ cm

Maintenance advice     

Label France Terre Textile / OEKO-TEX STANDARD 100

Minimum order 25 linear(s) meter(s)



Visual not taking into account the printing medium, the final rendering may vary according to the chosen medium.

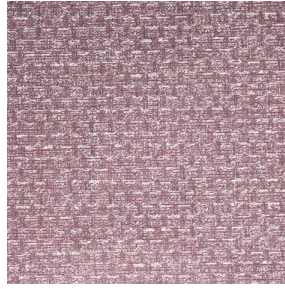
## Technical characteristics

Flame retardant	M1 / B1 / IMO PASS
Optical index	Light reflexion : 25 %
	Light absorption : 4 %
	Light transmission : 71 %
Transparent veil	Yes
Thermal index	Solar reflexion : 25 %
	Solar absorption : 3 %
	Solar transmission : 72 %
	UV transmission : 65 %
	Gtot : Gt 50 % Fc 85 %
Resilience	Lightfastness (units Class/8) 6
	Dimensional Stability (%)
	Warp -1
	Weft 0
	Breaking Elongation
	Warp 28
	Weft 34
	Breaking load (daN)
	Warp 30
	Weft 36

# Print pattern RUSTIC



RUSTIC Naturel 26



RUSTIC Sienne 29



RUSTIC Terre 107



RUSTIC Taupe 95



RUSTIC Titanium 98



RUSTIC Hortensia 134



RUSTIC Bergamote 121



RUSTIC Mousse 92



RUSTIC Prairie 125



RUSTIC Glacier 43



RUSTIC Bleu 41



(Headquarters) SOTEXPRO - 510 route de Montchal - 42360 PANISSIÈRES - FRANCE - +33 4 77 27 60 60  
(Showroom) Le LAB' SOTEXPRO - 4 rue du Mail - 75002 PARIS - FRANCE

Non-contractual photos and colors - Indicative fitting - Fitting may vary depending on support selected