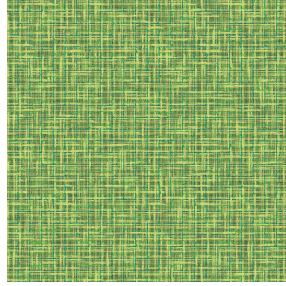




3141 bpi 00  
Printing support



SALIN Anis 62  
Print pattern



## Printing support 3141 bpi 00 Print pattern SALIN Anis 62

Sheer fabric support for digital printing.

### Technical properties



Flame retardant    Transparent

**Applications** Roman blinds - Panel curtains - Curtains

**Composition** polyester/polyester FR

**Weight** 50 g/m<sup>2</sup>

**Width** 290 cm

**Fabric direction** Room High Direction

**Fitting** ↔ 0.0 cm ↓ 0.0 cm

**Maintenance advice**     

**Label** France Terre Textile / OEKO-TEX STANDARD 100

**Minimum order** 25 linear(s) meter(s)



Visual not taking into account the printing medium, the final rendering may vary according to the chosen medium.

## Technical characteristics

Flame retardant	M1 / B1 / IMO PASS
Optical index	Light reflexion : 25 %
	Light absorption : 4 %
	Light transmission : 71 %
Transparent veil	Yes
Thermal index	Solar reflexion : 25 %
	Solar absorption : 3 %
	Solar transmission : 72 %
	UV transmission : 65 %
	Gtot : Gt 50 % Fc 85 %
Resilience	Lightfastness (units Class/8) 6
	Dimensional Stability (%)
	Warp -1
	Weft 0
	Breaking Elongation
	Warp 28
	Weft 34
	Breaking load (daN)
	Warp 30
Weft 36	

# Print pattern SALIN



SALIN Abricot 08



SALIN Fuchsia 33



SALIN Naturel 26



SALIN Océan 91



SALIN Orange 15



SALIN Rouge 21



SALIN Turquoise 53



SALIN Vert 24



(Headquarters) SOTEXPRO - 510 route de Montchal - 42360 PANISSIÈRES - FRANCE - +33 4 77 27 60 60  
(Showroom) Le LAB' SOTEXPRO - 4 rue du Mail - 75002 PARIS - FRANCE

*Non-contractual photos and colors - Indicative fitting - Fitting may vary depending on support selected*