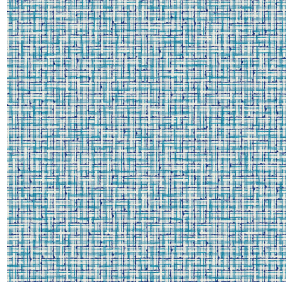




3141 bpi 00
Printing support



SALIN Turquoise 53
Print pattern



Printing support 3141 bpi 00 Print pattern SALIN Turquoise 53

Sheer fabric support for digital printing.

Technical properties



Flame retardant Transparent

Applications Roman blinds - Panel curtains - Curtains

Composition polyester/polyester FR

Weight 50 g/m²

Width 290 cm

Fabric direction Room High Direction

Fitting ↔ 0.0 cm ↓ 0.0 cm

Maintenance advice     

Label France Terre Textile / OEKO-TEX STANDARD 100

Minimum order 25 linear(s) meter(s)



Visual not taking into account the printing medium, the final rendering may vary according to the chosen medium.

Technical characteristics

Flame retardant	M1 / B1 / IMO PASS
Optical index	Light reflexion : 25 %
	Light absorption : 4 %
	Light transmission : 71 %
Transparent veil	Yes
Thermal index	Solar reflexion : 25 %
	Solar absorption : 3 %
	Solar transmission : 72 %
	UV transmission : 65 %
	Gtot : Gt 50 % Fc 85 %
Resilience	Lightfastness (units Class/8) 6
	Dimensional Stability (%)
	Warp -1
	Weft 0
	Breaking Elongation
	Warp 28
	Weft 34
	Breaking load (daN)
	Warp 30
Weft 36	

Print pattern SALIN



SALIN Abricot 08



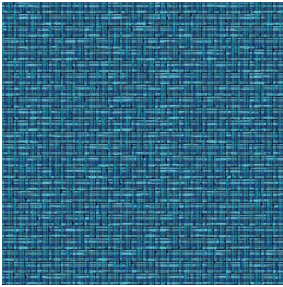
SALIN Anis 62



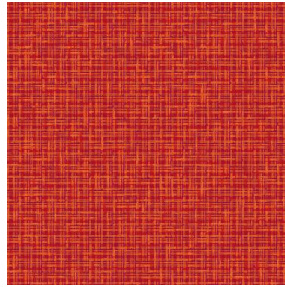
SALIN Fuchsia 33



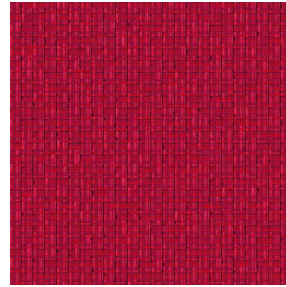
SALIN Naturel 26



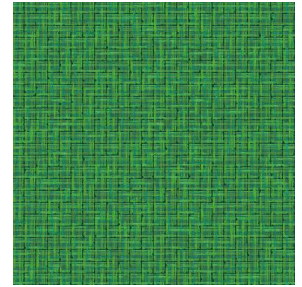
SALIN Océan 91



SALIN Orange 15



SALIN Rouge 21



SALIN Vert 24



(Headquarters) SOTEXPRO - 510 route de Montchal - 42360 PANISSIÈRES - FRANCE - +33 4 77 27 60 60
(Showroom) Le LAB' SOTEXPRO - 4 rue du Mail - 75002 PARIS - FRANCE

Non-contractual photos and colors - Indicative fitting - Fitting may vary depending on support selected