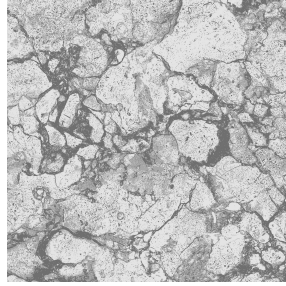




3141 bpi 00  
Printing support



CARRARA Gris 97  
Print pattern



## Printing support 3141 bpi 00 Print pattern CARRARA Gris 97

Sheer fabric support for digital printing.

### Technical properties



Flame retardant



Transparent

**Applications** Roman blinds - Panel curtains - Curtains

**Composition** polyester/polyester FR

**Weight** 50 g/m<sup>2</sup>

**Width** 290 cm

**Fabric direction** Room High Direction

**Fitting** ↔ 0.0 cm ↓ 0.0 cm

**Maintenance advice**     

**Label** France Terre Textile / OEKO-TEX STANDARD 100

**Minimum order** 25 linear(s) meter(s)

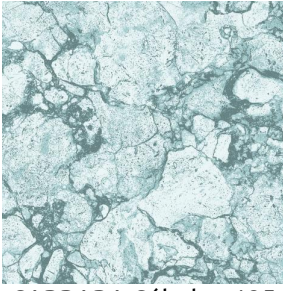


Visual not taking into account the printing medium, the final rendering may vary according to the chosen medium.

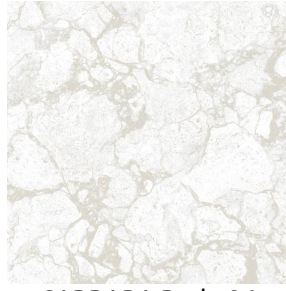
## Technical characteristics

Flame retardant	M1 / B1 / IMO PASS	
Optical index	Light reflexion :	25 %
	Light absorption :	4 %
	Light transmission :	71 %
Transparent veil	Yes	
Thermal index	Solar reflexion :	25 %
	Solar absorption :	3 %
	Solar transmission :	72 %
	UV transmission :	65 %
	Gtot :	Gt 50 % Fc 85 %
Resilience	Lightfastness (units Class/8)	6
	Dimensional Stability (%)	
	Warp	-1
	Weft	0
	Breaking Elongation	
	Warp	28
	Weft	34
	Breaking load (daN)	
	Warp	30
	Weft	36

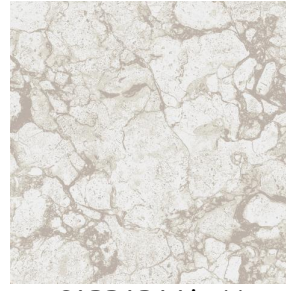
# Print pattern CARRARA



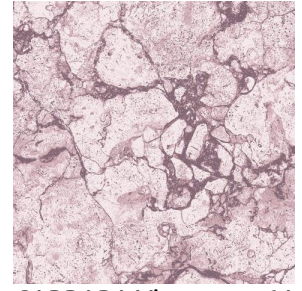
CARRARA Céladon 135



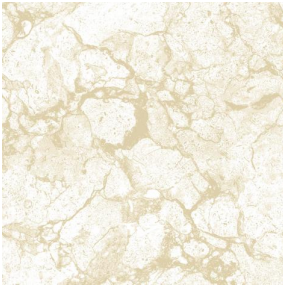
CARRARA Perle 96



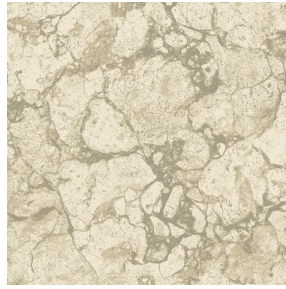
CARRARA Lin 11



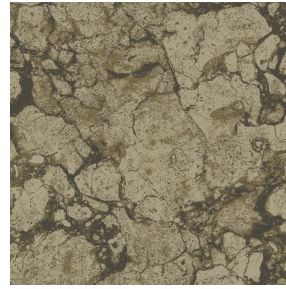
CARRARA Vieux rose 64



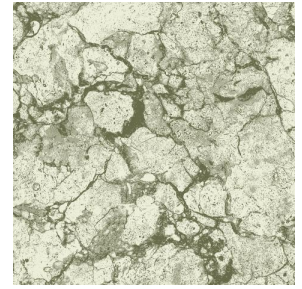
CARRARA Naturel 26



CARRARA Ficelle 09



CARRARA Chamois 111



CARRARA Absinthe 132



(Headquarters) SOTEXPRO - 510 route de Montchal - 42360 PANISSIÈRES - FRANCE - +33 4 77 27 60 60  
(Showroom) Le LAB' SOTEXPRO - 4 rue du Mail - 75002 PARIS - FRANCE

Non-contractual photos and colors - Indicative fitting - Fitting may vary depending on support selected