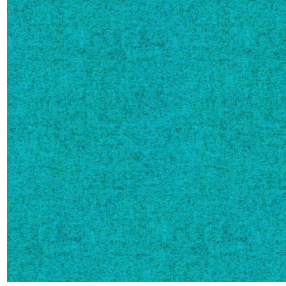




3141 bpi 00  
Printing support



ELAINA Turquoise 53  
Print pattern



## Printing support 3141 bpi 00 Print pattern ELAINA Turquoise 53

Sheer fabric support for digital printing.

### Technical properties



Flame retardant Transparent

Applications Roman blinds - Panel curtains - Curtains

Composition polyester/polyester FR

Weight 50 g/m<sup>2</sup>

Width 290 cm

Fabric direction Room High Direction

Fitting ↔ 0.0 cm ↓ 0.0 cm

Maintenance advice     

Label France Terre Textile / OEKO-TEX STANDARD 100

Minimum order 25 linear(s) meter(s)



Visual not taking into account the printing medium, the final rendering may vary according to the chosen medium.

## Technical characteristics

|                  |                               |                 |
|------------------|-------------------------------|-----------------|
| Flame retardant  | M1 / B1 / IMO PASS            |                 |
| Optical index    | Light reflexion :             | 25 %            |
|                  | Light absorption :            | 4 %             |
|                  | Light transmission :          | 71 %            |
| Transparent veil | Yes                           |                 |
| Thermal index    | Solar reflexion :             | 25 %            |
|                  | Solar absorption :            | 3 %             |
|                  | Solar transmission :          | 72 %            |
|                  | UV transmission :             | 65 %            |
|                  | Gtot :                        | Gt 50 % Fc 85 % |
| Resilience       | Lightfastness (units Class/8) | 6               |
|                  | Dimensional Stability (%)     |                 |
|                  | Warp                          | -1              |
|                  | Weft                          | 0               |
|                  | Breaking Elongation           |                 |
|                  | Warp                          | 28              |
|                  | Weft                          | 34              |
|                  | Breaking load (daN)           |                 |
|                  | Warp                          | 30              |
| Weft             | 36                            |                 |

# Print pattern ELAINA



ELAINA Gris 91



ELAINA Violine 105



ELAINA Ocre 03



ELAINA Lin 11



ELAINA Bergamote 121



ELAINA Rose 129



ELAINA Pacifique 54



ELAINA Beige 63



ELAINA Céladon 135



ELAINA Saphir 106



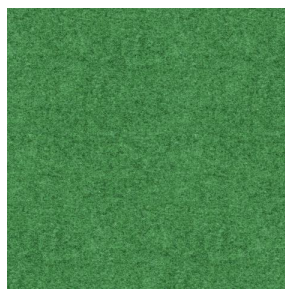
ELAINA Anis 62



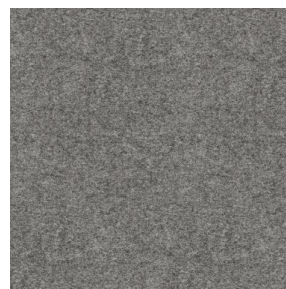
ELAINA Rouge 21



ELAINA Hortensia 134



ELAINA Prairie 125



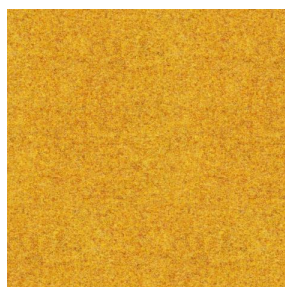
ELAINA Graphite 77



ELAINA Lierre 124



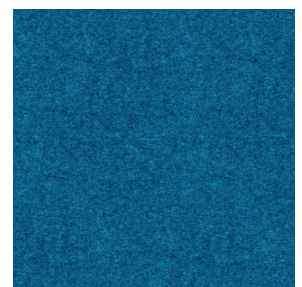
ELAINA Naturel 26



ELAINA Genêt 06



ELAINA Ivoire 115



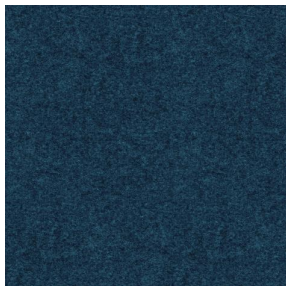
ELAINA Gentiane 16



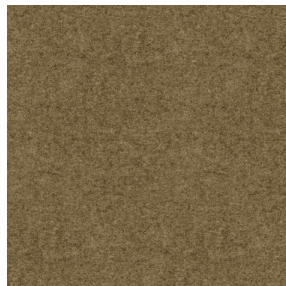
(Headquarters) SOTEXPRO - 510 route de Montchal - 42360 PANISSIÈRES - FRANCE - +33 4 77 27 60 60  
(Showroom) Le LAB' SOTEXPRO - 4 rue du Mail - 75002 PARIS - FRANCE

Non-contractual photos and colors - Indicative fitting - Fitting may vary depending on support selected

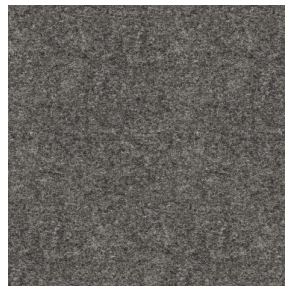
## Print pattern ELAINA



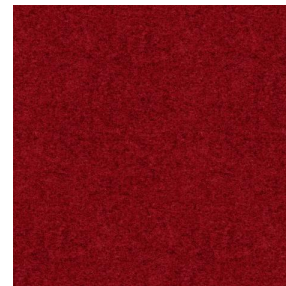
ELAINA Navy 120



ELAINA Chamois 111



ELAINA Anthracite 38



ELAINA Fiesta 131



(Headquarters) SOTEXPRO - 510 route de Montchal - 42360 PANISSIÈRES - FRANCE - +33 4 77 27 60 60  
(Showroom) Le LAB' SOTEXPRO - 4 rue du Mail - 75002 PARIS - FRANCE

*Non-contractual photos and colors - Indicative fitting - Fitting may vary depending on support selected*