



3141 bpi 00
Printing support



ANGELE Fuchsia 33
Print pattern



Printing support 3141 bpi 00 Print pattern ANGELE Fuchsia 33

Sheer fabric support for digital printing.

Technical properties



Flame retardant Transparent

Applications Roman blinds - Panel curtains - Curtains

Composition polyester/polyester FR

Weight 50 g/m²

Width 290 cm

Fabric direction Room High Direction

Fitting ↔ 30.0 cm ↓ 30.0 cm

Maintenance advice     

Label France Terre Textile / OEKO-TEX STANDARD 100

Minimum order 25 linear(s) meter(s)



Visual not taking into account the printing medium, the final rendering may vary according to the chosen medium.

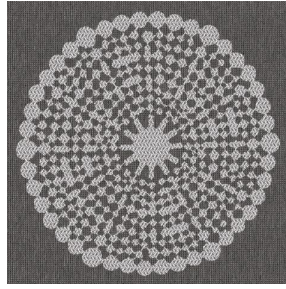
Technical characteristics

Flame retardant	M1 / B1 / IMO PASS
Optical index	Light reflexion : 25 %
	Light absorption : 4 %
	Light transmission : 71 %
Transparent veil	Yes
Thermal index	Solar reflexion : 25 %
	Solar absorption : 3 %
	Solar transmission : 72 %
	UV transmission : 65 %
	Gtot : Gt 50 % Fc 85 %
Resilience	Lightfastness (units Class/8) 6
	Dimensional Stability (%)
	Warp -1
	Weft 0
	Breaking Elongation
	Warp 28
	Weft 34
	Breaking load (daN)
	Warp 30
Weft 36	

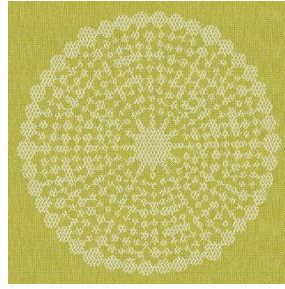
Print pattern ANGELE



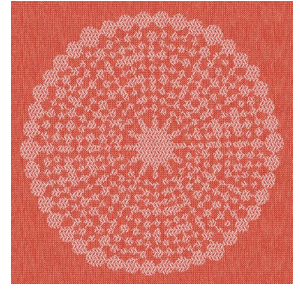
ANGELE Océan 91



ANGELE Taupe 95



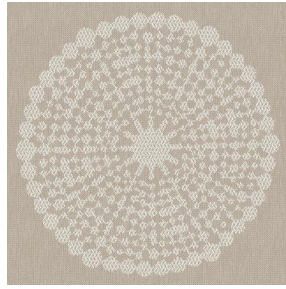
ANGELE Anis 62



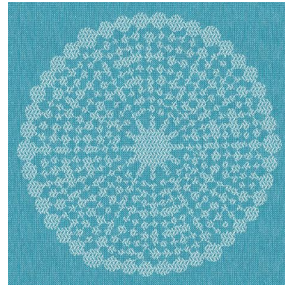
ANGELE Orange 15



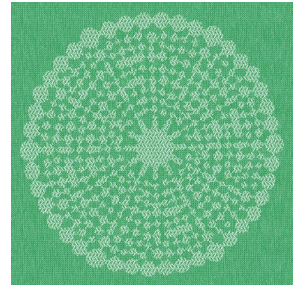
ANGELE Prune 84



ANGELE Sable 67



ANGELE Turquoise 53



ANGELE Vert 24



(Headquarters) SOTEXPRO - 510 route de Montchal - 42360 PANISSIÈRES - FRANCE - +33 4 77 27 60 60
(Showroom) Le LAB' SOTEXPRO - 4 rue du Mail - 75002 PARIS - FRANCE

Non-contractual photos and colors - Indicative fitting - Fitting may vary depending on support selected