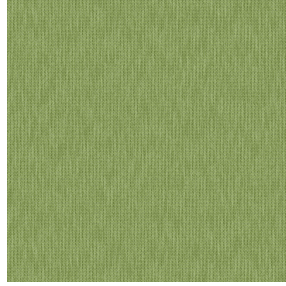




3141 bpi 00  
Printing support



CALI Lierre 24  
Print pattern

## Printing support 3141 bpi 00 Print pattern CALI Lierre 24

Sheer fabric support for digital printing.

### Technical properties



Flame retardant Transparent

Applications Roman blinds - Panel curtains - Curtains

Composition polyester/polyester FR

Weight 50 g/m<sup>2</sup>

Width 290 cm

Fabric direction Room High Direction

Fitting ↔ 33.0 cm ↓ 33.0 cm

Maintenance advice

Label France Terre Textile / OEKO-TEX STANDARD 100

Minimum order 25 linear(s) meter(s)



Visual not taking into account the printing medium, the final rendering may vary according to the chosen medium.

## Technical characteristics

Flame retardant	M1 / B1 / IMO PASS	
Optical index	Light reflexion :	25 %
	Light absorption :	4 %
	Light transmission :	71 %
Transparent veil	Yes	
Thermal index	Solar reflexion :	25 %
	Solar absorption :	3 %
	Solar transmission :	72 %
	UV transmission :	65 %
	Gtot :	Gt 50 % Fc 85 %
Resilience	Lightfastness (units Class/8)	6
	Dimensional Stability (%)	
	Warp	-1
	Weft	0
	Breaking Elongation	
	Warp	28
	Weft	34
	Breaking load (daN)	
	Warp	30
	Weft	36

## Print pattern CALI



CALI Orange 15



CALI Terracotta 65



CALI Jade 116



CALI Soleil 127



CALI Etang 165



CALI Naturel 26



(Headquarters) SOTEXPRO - 510 route de Montchal - 42360 PANISSIÈRES - FRANCE - +33 4 77 27 60 60  
(Showroom) Le LAB' SOTEXPRO - 4 rue du Mail - 75002 PARIS - FRANCE

Non-contractual photos and colors - Indicative fitting - Fitting may vary depending on support selected