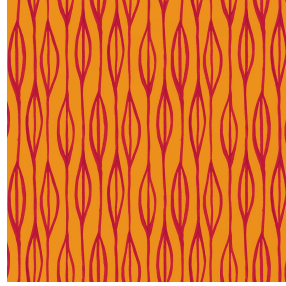




**834S BLANC 01**  
Printing support



**YENDI Sanguine 05**  
Print pattern



## Printing support **834S BLANC 01** Print pattern **YENDI Sanguine 05**

Light and aerial gauze, the 834 S offers privacy meanwhile letting the light get through, its weaving technique gives it a great finesse and a good resistance.

### Technical properties



Flame retardant    Transparent

**Applications** Roman blinds - Panel curtains - Curtains

**Composition** polyester/polyester FR

**Weight** 40 g/m<sup>2</sup>

**Width** 280 cm

**Fabric direction** Room High Direction

**Fitting** ↔ 24.0 cm ↓ 20.0 cm

**Maintenance advice**    

**Label** France Terre Textile

**Minimum order** 25 linear(s) meter(s)



Visual not taking into account the printing medium, the final rendering may vary according to the chosen medium.

## Technical characteristics

Flame retardant	M1 / B1 / IMO PASS	
Transparent veil	Yes	
Resilience	Lightfastness (units Class/8)	<b>6</b>
	Dimensional Stability (%)	
	Warp	<b>0.5</b>
	Weft	<b>0</b>
	Breaking Elongation	
	Warp	<b>36</b>
	Weft	<b>33</b>
	Breaking load (daN)	
	Warp	<b>31</b>
	Weft	<b>23</b>

# Print pattern YENDI



YENDI Anis 62



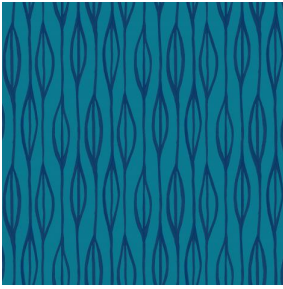
YENDI Lagon 110



YENDI Lilas 19



YENDI Opéra 104



YENDI Pacifique 54



YENDI Sapin 126



YENDI Soleil 127



YENDI Terre 107



(Headquarters) SOTEXPRO - 510 route de Montchal - 42360 PANISSIÈRES - FRANCE - +33 4 77 27 60 60  
(Showroom) Le LAB' SOTEXPRO - 4 rue du Mail - 75002 PARIS - FRANCE

Non-contractual photos and colors - Indicative fitting - Fitting may vary depending on support selected