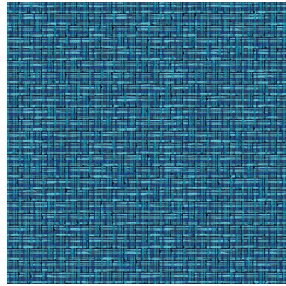




ASTRAL BPI 00
Printing support



SALIN Océan 91
Print pattern



Printing support **ASTRAL BPI 00** Print pattern **SALIN Océan 91**

Blackout Print Support

Technical properties



Flame retardant



Thermal

Applications Roman blinds - Panel curtains - Curtains

Composition 100% polyester with white flocked acrylic backing

Weight 280 g/m²

Width 280 cm

Fabric direction Room high or standard direction

Fitting ↔ 0.0 cm ↓ 0.0 cm

Maintenance advice

Label

Minimum order 25 linear(s) meter(s)



Visual not taking into account the printing medium, the final rendering may vary according to the chosen medium.

Technical characteristics

Flame retardant

EN13773 : 2003 Class 1 / BS 5867 TYPE C / B1 / IMO PASS / UNI 8456 / 9174 Classe Uno

Optical index

Light reflexion : **82 %**
Light absorption : **18 %**
Light transmission : **0 %**

Thermal index

Solar reflexion : **74 %**
Solar absorption : **26 %**
Solar transmission : **0 %**
UV transmission : **0 %**
Gtot : **Gt 33 % Fc 55 %**

Resilience

Lightfastness (units Class/8) **5**
Dimensional Stability (%)
Warp **-0,5**
Weft **0**
Breaking Elongation
Warp **26**
Weft **15**
Breaking load (daN)
Warp **62**
Weft **31**

Print pattern SALIN



SALIN Abricot 08



SALIN Anis 62



SALIN Fuchsia 33



SALIN Naturel 26



SALIN Orange 15



SALIN Rouge 21



SALIN Turquoise 53



SALIN Vert 24



(Headquarters) SOTEXPRO - 510 route de Montchal - 42360 PANISSIÈRES - FRANCE - +33 4 77 27 60 60
(Showroom) Le LAB' SOTEXPRO - 4 rue du Mail - 75002 PARIS - FRANCE

Non-contractual photos and colors - Indicative fitting - Fitting may vary depending on support selected