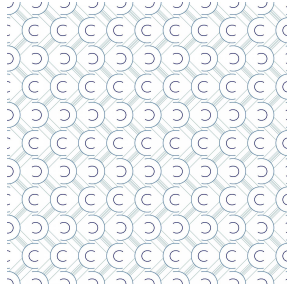




**ASTRAL BPI 00**  
Printing support



**VARELY Marine 25**  
Print pattern



## Printing support **ASTRAL BPI 00** Print pattern **VARELY Marine 25**

Blackout Print Support

### Technical properties



Flame retardant



Thermal

**Applications** Roman blinds - Panel curtains - Curtains

**Composition** 100% polyester with white flocked acrylic backing

**Weight** 280 g/m<sup>2</sup>

**Width** 280 cm

**Fabric direction** Room high or standard direction

**Fitting** ↔ 0.0 cm ↓ 0.0 cm

**Maintenance advice**     

**Label**

**Minimum order** 25 linear(s) meter(s)



Visual not taking into account the printing medium, the final rendering may vary according to the chosen medium.

## Technical characteristics

Flame retardant

EN13773 : 2003 Class 1 / BS 5867 TYPE C / B1 / IMO PASS / UNI 8456 / 9174 Classe Uno

Optical index

Light reflexion : **82 %**

Light absorption : **18 %**

Light transmission : **0 %**

Thermal index

Solar reflexion : **74 %**

Solar absorption : **26 %**

Solar transmission : **0 %**

UV transmission : **0 %**

Gtot : **Gt 33 % Fc 55 %**

Resilience

Lightfastness (units Class/8) **5**

Dimensional Stability (%)

Warp **-0,5**

Weft **0**

Breaking Elongation

Warp **26**

Weft **15**

Breaking load (daN)

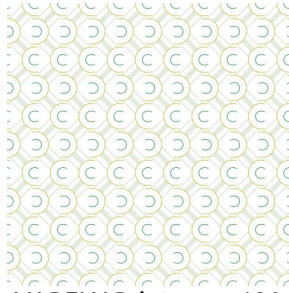
Warp **62**

Weft **31**

# Print pattern VARELY



VARELY Violine 105



VARELY Printemps 130



VARELY Titanium 98



(Headquarters) SOTEXPRO - 510 route de Montchal - 42360 PANISSIÈRES - FRANCE - +33 4 77 27 60 60  
(Showroom) Le LAB' SOTEXPRO - 4 rue du Mail - 75002 PARIS - FRANCE

*Non-contractual photos and colors - Indicative fitting - Fitting may vary depending on support selected*