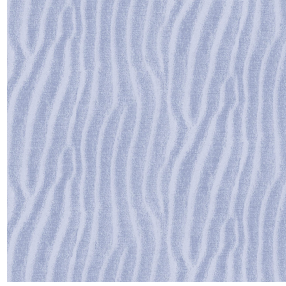




**ASTRAL BPI 00**  
Printing support



**SABLE Jasmin 74**  
Print pattern



## Printing support **ASTRAL BPI 00** Print pattern **SABLE Jasmin 74**

Blackout Print Support

### Technical properties



Flame retardant



Thermal

**Applications** Roman blinds - Panel curtains - Curtains

**Composition** 100% polyester with white flocked acrylic backing

**Weight** 280 g/m<sup>2</sup>

**Width** 280 cm

**Fabric direction** Room high or standard direction

**Fitting** ↔ 0.0 cm ↓ 0.0 cm

**Maintenance advice**     

**Label**

**Minimum order** 25 linear(s) meter(s)



Visual not taking into account the printing medium, the final rendering may vary according to the chosen medium.

## Technical characteristics

Flame retardant	EN13773 : 2003 Class 1 / BS 5867 TYPE C / B1 / IMO PASS / UNI 8456 / 9174 Classe Uno	
Optical index	Light reflexion :	<b>82 %</b>
	Light absorption :	<b>18 %</b>
	Light transmission :	<b>0 %</b>
Thermal index	Solar reflexion :	<b>74 %</b>
	Solar absorption :	<b>26 %</b>
	Solar transmission :	<b>0 %</b>
	UV transmission :	<b>0 %</b>
	Gtot :	<b>Gt 33 % Fc 55 %</b>
Resilience	Lightfastness (units Class/8)	<b>5</b>
	Dimensional Stability (%)	
	Warp	<b>-0,5</b>
	Weft	<b>0</b>
	Breaking Elongation	
	Warp	<b>26</b>
	Weft	<b>15</b>
	Breaking load (daN)	
Warp	<b>62</b>	
Weft	<b>31</b>	

## Print pattern SABLE



SABLE Lin 11



SABLE Rose 129



SABLE Sable 67



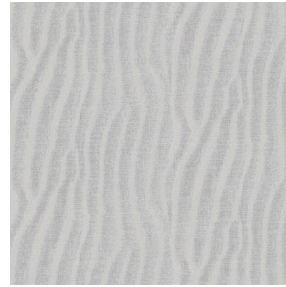
SABLE Absinthe 132



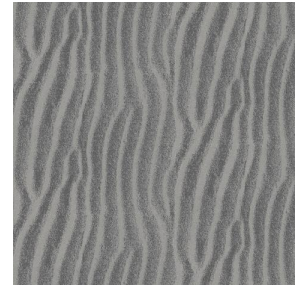
SABLE Ivoire 115



SABLE Noir 10



SABLE Souris 31



SABLE Gris 97



(Headquarters) SOTEXPRO - 510 route de Montchal - 42360 PANISSIÈRES - FRANCE - +33 4 77 27 60 60  
(Showroom) Le LAB' SOTEXPRO - 4 rue du Mail - 75002 PARIS - FRANCE

Non-contractual photos and colors - Indicative fitting - Fitting may vary depending on support selected