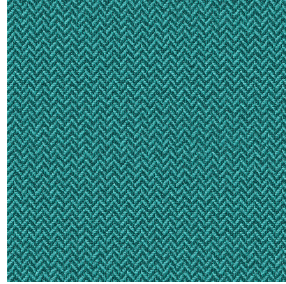




ASTRAL BPI 00
Printing support



SCOURTIN Lagon 110
Print pattern



Printing support **ASTRAL BPI 00** Print pattern **SCOURTIN Lagon 110**

Blackout Print Support

Technical properties



Flame retardant



Thermal

Applications Roman blinds - Panel curtains - Curtains

Composition 100% polyester with white flocked acrylic backing

Weight 280 g/m²

Width 280 cm

Fabric direction Room high or standard direction

Fitting ↔ cm ↓ cm

Maintenance advice     

Label

Minimum order 25 linear(s) meter(s)



Visual not taking into account the printing medium, the final rendering may vary according to the chosen medium.

Technical characteristics

| | | |
|-----------------|--|------------------------|
| Flame retardant | EN13773 : 2003 Class 1 / BS 5867 TYPE C / B1 / IMO PASS / UNI 8456 / 9174 Classe Uno | |
| Optical index | Light reflexion : | 82 % |
| | Light absorption : | 18 % |
| | Light transmission : | 0 % |
| Thermal index | Solar reflexion : | 74 % |
| | Solar absorption : | 26 % |
| | Solar transmission : | 0 % |
| | UV transmission : | 0 % |
| | Gtot : | Gt 33 % Fc 55 % |
| Resilience | Lightfastness (units Class/8) | 5 |
| | Dimensional Stability (%) | |
| | Warp | -0,5 |
| | Weft | 0 |
| | Breaking Elongation | |
| | Warp | 26 |
| | Weft | 15 |
| | Breaking load (daN) | |
| Warp | 62 | |
| Weft | 31 | |

Print pattern SCOURTIN



SCOURTIN Beige 63



SCOURTIN Fuchsia 33



SCOURTIN Sapin 126



SCOURTIN Bergamote
121



SCOURTIN Anthracite
38



SCOURTIN Violine 105



SCOURTIN Pacifique 54



SCOURTIN Rose 129



SCOURTIN Blanc 01



SCOURTIN Lin 11



SCOURTIN Naturel 26



SCOURTIN Citrouille
136



SCOURTIN Turquoise 53



SCOURTIN Brun 23



SCOURTIN Hortensia
134



SCOURTIN Orage 123



SCOURTIN Rubis 59



SCOURTIN Ficelle 09



SCOURTIN Maïs 37



SCOURTIN Céladon 135



sotexpro

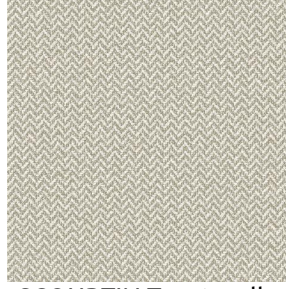
(Headquarters) SOTEXPRO - 510 route de Montchal - 42360 PANISSIÈRES - FRANCE - +33 4 77 27 60 60
(Showroom) Le LAB' SOTEXPRO - 4 rue du Mail - 75002 PARIS - FRANCE

Non-contractual photos and colors - Indicative fitting - Fitting may vary depending on support selected

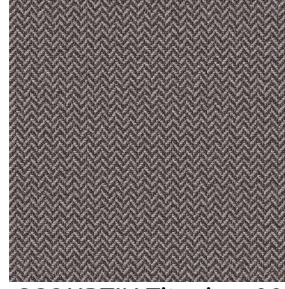
Print pattern SCOURTIN



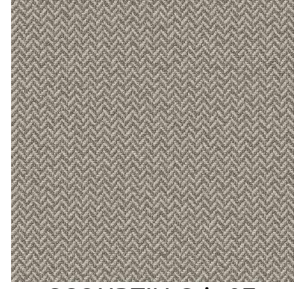
SCOURTIN Ébene 113



SCOURTIN Tourterelle
138



SCOURTIN Titanium 98



SCOURTIN Gris 97



(Headquarters) SOTEXPRO - 510 route de Montchal - 42360 PANISSIÈRES - FRANCE - +33 4 77 27 60 60
(Showroom) Le LAB' SOTEXPRO - 4 rue du Mail - 75002 PARIS - FRANCE

Non-contractual photos and colors - Indicative fitting - Fitting may vary depending on support selected