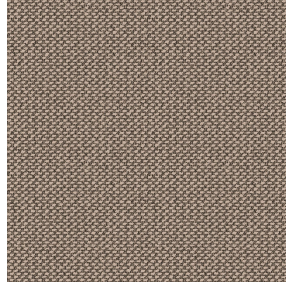




ASTRAL BPI 00
Printing support



METIS Ficelle 09
Print pattern



Printing support **ASTRAL BPI 00** Print pattern **METIS Ficelle 09**

Blackout Print Support

Technical properties



Flame retardant



Thermal

Applications Roman blinds - Panel curtains - Curtains

Composition 100% polyester with white flocked acrylic backing

Weight 280 g/m²

Width 280 cm

Fabric direction Room high or standard direction

Fitting ↔ 0.0 cm ↓ 0.0 cm

Maintenance advice

Label

Minimum order 25 linear(s) meter(s)



Visual not taking into account the printing medium, the final rendering may vary according to the chosen medium.

Technical characteristics

Flame retardant	EN13773 : 2003 Class 1 / BS 5867 TYPE C / B1 / IMO PASS / UNI 8456 / 9174 Classe Uno	
Optical index	Light reflexion :	82 %
	Light absorption :	18 %
	Light transmission :	0 %
Thermal index	Solar reflexion :	74 %
	Solar absorption :	26 %
	Solar transmission :	0 %
	UV transmission :	0 %
	Gtot :	Gt 33 % Fc 55 %
Resilience	Lightfastness (units Class/8)	5
	Dimentional Stability (%)	
	Warp	-0,5
	Weft	0
	Breaking Elongation	
	Warp	26
	Weft	15
	Breaking load (daN)	
Warp	62	
Weft	31	

Print pattern METIS



METIS Gentiane 16



METIS Absinthe 132



METIS Noir 10



METIS Citrouille 136



METIS Chanvre 72



METIS Gris 97



METIS Bergamote 121



METIS Violine 105



METIS Perle 96



METIS Céladon 135



METIS Lin 11



METIS Sienne 29



METIS Lagon 110



METIS Cobalt 114



METIS Framboise 81



METIS Abricot 08



METIS Chamois 111



METIS Ivoire 115



METIS Rose 129



METIS Parme 79



(Headquarters) SOTEXPRO - 510 route de Montchal - 42360 PANISSIÈRES - FRANCE - +33 4 77 27 60 60
(Showroom) Le LAB' SOTEXPRO - 4 rue du Mail - 75002 PARIS - FRANCE

Non-contractual photos and colors - Indicative fitting - Fitting may vary depending on support selected

Print pattern METIS



METIS Cactus 36



METIS Hortensia 134



METIS Naturel 26



METIS Chaudron 118



(Headquarters) SOTEXPRO - 510 route de Montchal - 42360 PANISSIÈRES - FRANCE - +33 4 77 27 60 60
(Showroom) Le LAB' SOTEXPRO - 4 rue du Mail - 75002 PARIS - FRANCE

Non-contractual photos and colors - Indicative fitting - Fitting may vary depending on support selected