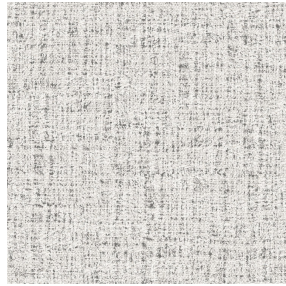




ASTRAL BPI 00
Printing support



MURA MASTIC 48
Print pattern

Printing support **ASTRAL BPI 00** Print pattern **MURA MASTIC 48**

Blackout Print Support

Technical properties



Flame retardant



Thermal

Applications Roman blinds - Panel curtains - Curtains

Composition 100% polyester with white flocked acrylic backing

Weight 280 g/m²

Width 280 cm

Fabric direction Room high or standard direction

Fitting ↔ 13.0 cm ↓ 13.0 cm

Maintenance advice     

Label

Minimum order 25 linear(s) meter(s)



Visual not taking into account the printing medium, the final rendering may vary according to the chosen medium.

Technical characteristics

Flame retardant	EN13773 : 2003 Class 1 / BS 5867 TYPE C / B1 / IMO PASS / UNI 8456 / 9174 Classe Uno	
Optical index	Light reflexion :	82 %
	Light absorption :	18 %
	Light transmission :	0 %
Thermal index	Solar reflexion :	74 %
	Solar absorption :	26 %
	Solar transmission :	0 %
	UV transmission :	0 %
	Gtot :	Gt 33 % Fc 55 %
Resilience	Lightfastness (units Class/8)	5
	Dimentional Stability (%)	
	Warp	-0,5
	Weft	0
	Breaking Elongation	
	Warp	26
	Weft	15
	Breaking load (daN)	
	Warp	62
Weft	31	

Print pattern MURA



MURA NOIR 10



MURA GLACIER 43



MURA GRENAT 56



MURA OLIVE 61



MURA SAPHIR 106



MURA TERRE 107



MURA ROSE 129



MURA MINERAL 157



MURA DUNE 170



MURA ETAIN 180



MURA SAVANE 185



(Headquarters) SOTEXPRO - 510 route de Montchal - 42360 PANISSIÈRES - FRANCE - +33 4 77 27 60 60
(Showroom) Le LAB' SOTEXPRO - 4 rue du Mail - 75002 PARIS - FRANCE

Non-contractual photos and colors - Indicative fitting - Fitting may vary depending on support selected