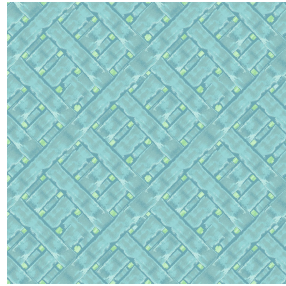




**ASTRAL BPI 00**  
Printing support



**MAXINE Naturel 26**  
Print pattern

## Printing support **ASTRAL BPI 00** Print pattern **MAXINE Naturel 26**

Blackout Print Support

### Technical properties



Flame retardant



Thermal

**Applications** Roman blinds - Panel curtains - Curtains

**Composition** 100% polyester with white flocked acrylic backing

**Weight** 280 g/m<sup>2</sup>

**Width** 280 cm

**Fabric direction** Room high or standard direction

**Fitting** ↔ 40.0 cm ↓ 40.0 cm

**Maintenance advice**     

**Label**

**Minimum order** 25 linear(s) meter(s)



Visual not taking into account the printing medium, the final rendering may vary according to the chosen medium.

## Technical characteristics

|                 |  |                        |
|-----------------|--|------------------------|
| Flame retardant | EN13773 : 2003 Class 1 / BS 5867 TYPE C / B1 / IMO PASS / UNI 8456 / 9174 Classe Uno |                        |
| Optical index   | Light reflexion :  | <b>82 %</b>            |
|                 | Light absorption :   | <b>18 %</b>            |
|                 | Light transmission :   | <b>0 %</b>             |
| Thermal index   | Solar reflexion :  | <b>74 %</b>            |
|                 | Solar absorption :   | <b>26 %</b>            |
|                 | Solar transmission :   | <b>0 %</b>             |
|                 | UV transmission :  | <b>0 %</b>             |
|                 | Gtot :   | <b>Gt 33 % Fc 55 %</b> |
| Resilience      | Lightfastness (units Class/8)  | <b>5</b>               |
|                 | Dimentional Stability (%)  |                        |
|                 | Warp   | <b>-0,5</b>            |
|                 | Weft   | <b>0</b>               |
|                 | Breaking Elongation  |                        |
|                 | Warp   | <b>26</b>              |
|                 | Weft   | <b>15</b>              |
|                 | Breaking load (daN)  |                        |
|                 | Warp   | <b>62</b>              |
| Weft            | <b>31</b>  |                        |