



BELORA BPI 00
Printing support



METIS Rose 129
Print pattern



Printing support **BELORA BPI 00** Print pattern **METIS Rose 129**

Dimout support for digital printing. It does not have an M1 fire rating.

Technical properties



Flame retardant



Thermal



Acoustic

Applications Roman blinds - Panel curtains - Lining - Curtains

Composition 100% polyester

Weight 260 g/m²

Width 140 cm

Fabric direction Standard Direction

Fitting ↔ 0.0 cm ↓ 0.0 cm

Maintenance advice     

Label OEKO-TEX STANDARD 100

Minimum order 25 linear(s) meter(s)



Visual not taking into account the printing medium, the final rendering may vary according to the chosen medium.

Technical characteristics

Flame retardant	NF 12952	
Acoustic	Noise reduction coefficient (NRC) :	0.88
Resilience	Dimensional Stability (%)	
	Warp	0
	Weft	0
	Breaking Elongation	
	Warp	17
	Weft	27
Resilience	Breaking load (daN)	
	Warp	87
	Weft	110

Print pattern METIS



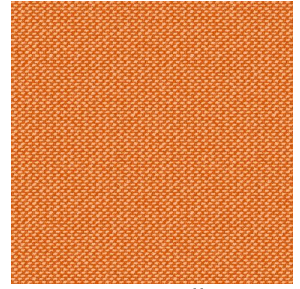
METIS Gentiane 16



METIS Absinthe 132



METIS Noir 10



METIS Citrouille 136



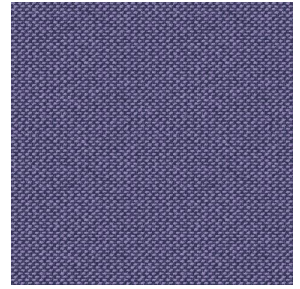
METIS Chanvre 72



METIS Gris 97



METIS Bergamote 121



METIS Violine 105



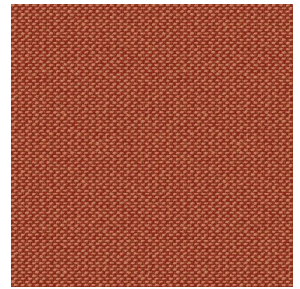
METIS Perle 96



METIS Céladon 135



METIS Lin 11



METIS Sienne 29



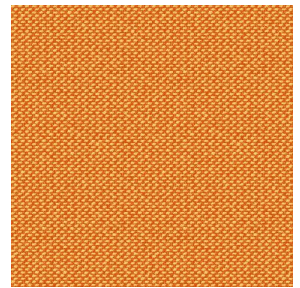
METIS Lagon 110



METIS Cobalt 114



METIS Framboise 81



METIS Abricot 08



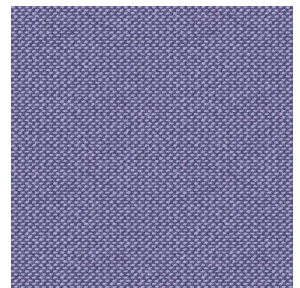
METIS Chamois 111



METIS Ivoire 115



METIS Ficelle 09



METIS Parme 79



(Headquarters) SOTEXPRO - 510 route de Montchal - 42360 PANISSIÈRES - FRANCE - +33 4 77 27 60 60
(Showroom) Le LAB' SOTEXPRO - 4 rue du Mail - 75002 PARIS - FRANCE

Non-contractual photos and colors - Indicative fitting - Fitting may vary depending on support selected

Print pattern METIS



METIS Cactus 36



METIS Hortensia 134



METIS Naturel 26



METIS Chaudron 118



(Headquarters) SOTEXPRO - 510 route de Montchal - 42360 PANISSIÈRES - FRANCE - +33 4 77 27 60 60
(Showroom) Le LAB' SOTEXPRO - 4 rue du Mail - 75002 PARIS - FRANCE

Non-contractual photos and colors - Indicative fitting - Fitting may vary depending on support selected