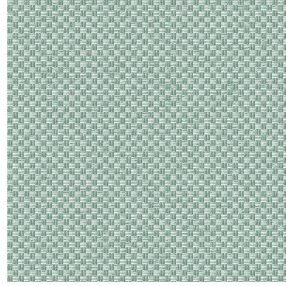




**BELORA BPI 00**  
Printing support



**CHARLOTTE Absinthe 132**  
Print pattern



Visual not taking into account the printing medium, the final rendering may vary according to the chosen medium.

## Printing support **BELORA BPI 00** Print pattern **CHARLOTTE Absinthe 132**

Dimout support for digital printing. It does not have an M1 fire rating.

### Technical properties



Flame retardant



Thermal



Acoustic

**Applications** Roman blinds - Panel curtains - Lining - Curtains


**Composition** 100% polyester

**Weight** 260 g/m<sup>2</sup>

**Width** 140 cm

**Fabric direction** Standard Direction

**Fitting** ↔ 0.0 cm ↓ 0.0 cm

**Maintenance advice**     

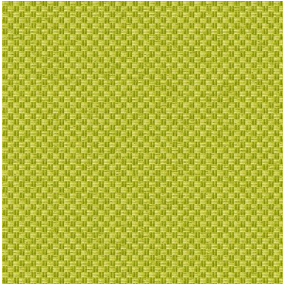
**Label** OEKO-TEX STANDARD 100

**Minimum order** 25 linear(s) meter(s)

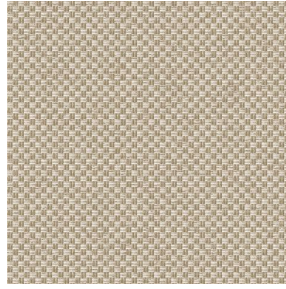
## Technical characteristics

|                 |                                     |             |
|-----------------|-------------------------------------|-------------|
| Flame retardant | NF 12952                            |             |
| Acoustic        | Noise reduction coefficient (NRC) : | <b>0.88</b> |
| Resilience      | Dimensional Stability (%)           |             |
|                 | Warp                                | <b>0</b>    |
|                 | Weft                                | <b>0</b>    |
|                 | Breaking Elongation                 |             |
|                 | Warp                                | <b>17</b>   |
|                 | Weft                                | <b>27</b>   |
|                 | Breaking load (daN)                 |             |
|                 | Warp                                | <b>87</b>   |
|                 | Weft                                | <b>110</b>  |

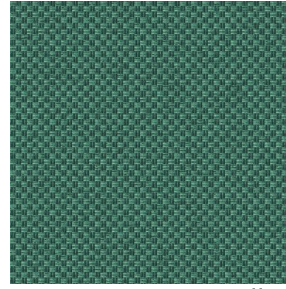
# Print pattern CHARLOTTE



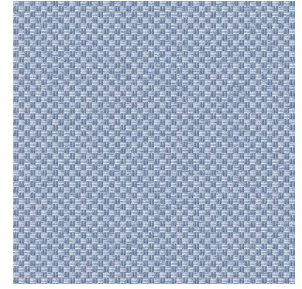
CHARLOTTE Anis 62



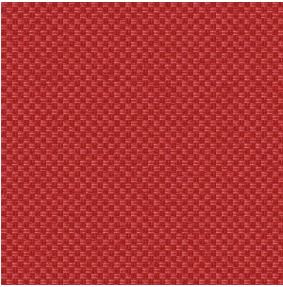
CHARLOTTE Beige 63



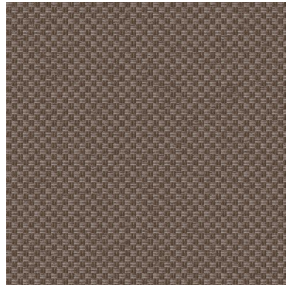
CHARLOTTE Bouteille  
101



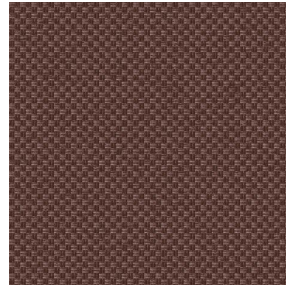
CHARLOTTE Brume 47



CHARLOTTE Cerise 66



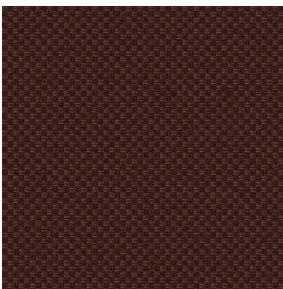
CHARLOTTE Chamois  
111



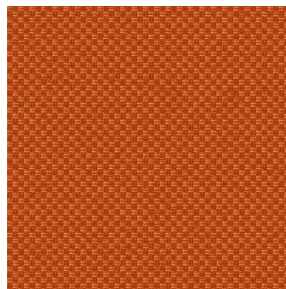
CHARLOTTE Chataigne  
55



CHARLOTTE Chaudron  
118



CHARLOTTE Chocolat  
70



CHARLOTTE Citrouille  
136



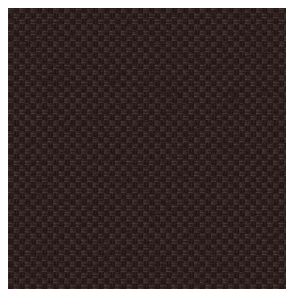
CHARLOTTE Cobalt 114



CHARLOTTE Crepuscule  
45



CHARLOTTE Cuivre 50



CHARLOTTE Ebene 124



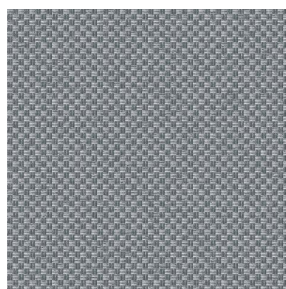
CHARLOTTE Ficelle 09



CHARLOTTE Fiesta 131



CHARLOTTE Grenat 56



CHARLOTTE Gris 97



CHARLOTTE Hortensia  
134



CHARLOTTE Lagon 110



(Headquarters) SOTEXPRO - 510 route de Montchal - 42360 PANISSIÈRES - FRANCE - +33 4 77 27 60 60  
(Showroom) Le LAB' SOTEXPRO - 4 rue du Mail - 75002 PARIS - FRANCE

Non-contractual photos and colors - Indicative fitting - Fitting may vary depending on support selected

# Print pattern CHARLOTTE



CHARLOTTE Lilas 19



CHARLOTTE Lin 11



CHARLOTTE Maïs 37



CHARLOTTE Melon 22



CHARLOTTE Menthe  
122



CHARLOTTE Mordore  
133



CHARLOTTE Mousse 92



CHARLOTTE Noir 10



CHARLOTTE Océan 91



CHARLOTTE Opéra 104



CHARLOTTE Orange 15



CHARLOTTE Pacifique  
54



CHARLOTTE Prairie 125



CHARLOTTE Printemps  
130



CHARLOTTE Sienne 29



CHARLOTTE Souris 31



CHARLOTTE Terre 107



CHARLOTTE Tilleul 103



CHARLOTTE Vieux rose  
64



CHARLOTTE Violine 105



(Headquarters) SOTEXPRO - 510 route de Montchal - 42360 PANISSIÈRES - FRANCE - +33 4 77 27 60 60  
(Showroom) Le LAB' SOTEXPRO - 4 rue du Mail - 75002 PARIS - FRANCE

Non-contractual photos and colors - Indicative fitting - Fitting may vary depending on support selected