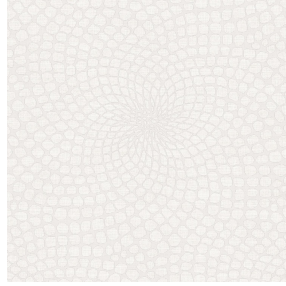




**BELORA BPI 00**  
Printing support



**MELODY Naturel 26**  
Print pattern



# Printing support **BELORA BPI 00** Print pattern **MELODY Naturel 26**

Dimout support for digital printing. It does not have an M1 fire rating.

## Technical properties



Flame retardant



Thermal



Acoustic

**Applications** Roman blinds - Panel curtains - Lining - Curtains

**Composition** 100% polyester

**Weight** 260 g/m<sup>2</sup>

**Width** 140 cm

**Fabric direction** Standard Direction

**Fitting** ↔ 0.0 cm ↓ 0.0 cm

**Maintenance advice**     

**Label** OEKO-TEX STANDARD 100

**Minimum order** 25 linear(s) meter(s)



Visual not taking into account the printing medium, the final rendering may vary according to the chosen medium.

## Technical characteristics

Flame retardant	NF 12952	
Acoustic	Noise reduction coefficient (NRC) :	<b>0.88</b>
Resilience	Dimensional Stability (%)	
	Warp	<b>0</b>
	Weft	<b>0</b>
	Breaking Elongation	
	Warp	<b>17</b>
	Weft	<b>27</b>
	Breaking load (daN)	
	Warp	<b>87</b>
Weft	<b>110</b>	

# Print pattern MELODY



MELODY Vanille 51



MELODY Fuchsia 33



MELODY Anis 62



MELODY Lin 11



MELODY Orange 15



MELODY Ficelle 09



MELODY Turquoise 53



MELODY Acier 18



(Headquarters) SOTEXPRO - 510 route de Montchal - 42360 PANISSIÈRES - FRANCE - +33 4 77 27 60 60  
(Showroom) Le LAB' SOTEXPRO - 4 rue du Mail - 75002 PARIS - FRANCE

*Non-contractual photos and colors - Indicative fitting - Fitting may vary depending on support selected*