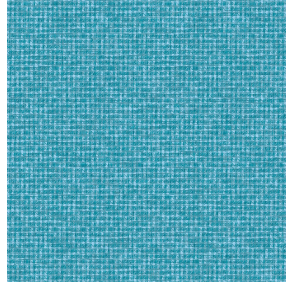




**BELORA BPI 00**  
Printing support



**FLOT Turquoise 53**  
Print pattern



## Printing support **BELORA BPI 00** Print pattern **FLOT Turquoise 53**

Dimout support for digital printing. It does not have an M1 fire rating.

### Technical properties



Flame retardant



Thermal



Acoustic

**Applications** Roman blinds - Panel curtains - Lining - Curtains

**Composition** 100% polyester

**Weight** 260 g/m<sup>2</sup>

**Width** 280 cm

**Fabric direction** Room High Direction

**Fitting** ↔ 0.0 cm ↓ 0.0 cm

**Maintenance advice**

**Label** OEKO-TEX STANDARD 100

**Minimum order** 25 linear(s) meter(s)

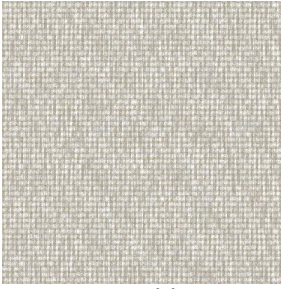


Visual not taking into account the printing medium, the final rendering may vary according to the chosen medium.

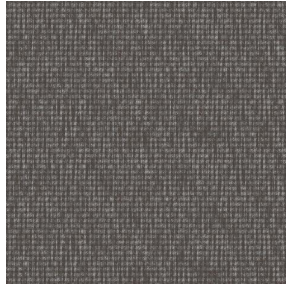
## Technical characteristics

|                 |                                     |             |
|-----------------|-------------------------------------|-------------|
| Flame retardant | NF 12952                            |             |
| Acoustic        | Noise reduction coefficient (NRC) : | <b>0.88</b> |
| Resilience      | Dimensional Stability (%)           |             |
|                 | Warp                                | <b>0</b>    |
|                 | Weft                                | <b>0</b>    |
|                 | Breaking Elongation                 |             |
|                 | Warp                                | <b>17</b>   |
|                 | Weft                                | <b>27</b>   |
|                 | Breaking load (daN)                 |             |
|                 | Warp                                | <b>87</b>   |
|                 | Weft                                | <b>110</b>  |

# Print pattern FLOT



FLOT Sable 67



FLOT Taupe 95



(Headquarters) SOTEXPRO - 510 route de Montchal - 42360 PANISSIÈRES - FRANCE - +33 4 77 27 60 60  
(Showroom) Le LAB' SOTEXPRO - 4 rue du Mail - 75002 PARIS - FRANCE

*Non-contractual photos and colors - Indicative fitting - Fitting may vary depending on support selected*