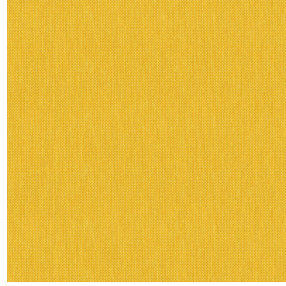




BELORA BPI 00
Printing support



RIVE Jaune 46
Print pattern



Printing support **BELORA BPI 00** Print pattern **RIVE Jaune 46**

Dimout support for digital printing. It does not have an M1 fire rating.

Technical properties



Flame retardant



Thermal



Acoustic

Applications Roman blinds - Panel curtains - Lining - Curtains

Composition 100% polyester

Weight 260 g/m²

Width 280 cm

Fabric direction Room High Direction

Fitting ↔ 0.0 cm ↓ 0.0 cm

Maintenance advice

Label OEKO-TEX STANDARD 100

Minimum order 25 linear(s) meter(s)



Visual not taking into account the printing medium, the final rendering may vary according to the chosen medium.

Technical characteristics

Flame retardant	NF 12952	
Acoustic	Noise reduction coefficient (NRC) :	0.88
Resilience	Dimensional Stability (%)	
	Warp	0
	Weft	0
	Breaking Elongation	
	Warp	17
	Weft	27
	Breaking load (daN)	
	Warp	87
	Weft	110

Print pattern RIVE



RIVE Fuchsia 33



RIVE Bleu 41



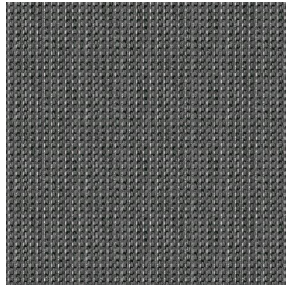
RIVE Océan 91



RIVE Turquoise 53



RIVE Sable 67



RIVE Taupe 95



RIVE Gris 97



(Headquarters) SOTEXPRO - 510 route de Montchal - 42360 PANISSIÈRES - FRANCE - +33 4 77 27 60 60
(Showroom) Le LAB' SOTEXPRO - 4 rue du Mail - 75002 PARIS - FRANCE

Non-contractual photos and colors - Indicative fitting - Fitting may vary depending on support selected