



BELORA BPI 00
Printing support



TERRA Céladon 135
Print pattern



Printing support **BELORA BPI 00** Print pattern **TERRA Céladon 135**

Dimout support for digital printing. It does not have an M1 fire rating.

Technical properties



Flame retardant



Thermal



Acoustic

Applications Roman blinds - Panel curtains - Lining - Curtains

Composition 100% polyester

Weight 260 g/m²

Width 280 cm

Fabric direction Room High Direction

Fitting ↔ 0.0 cm ↓ 0.0 cm

Maintenance advice     

Label OEKO-TEX STANDARD 100

Minimum order 25 linear(s) meter(s)



Visual not taking into account the printing medium, the final rendering may vary according to the chosen medium.

Technical characteristics

Flame retardant	NF 12952	
Acoustic	Noise reduction coefficient (NRC) :	0.88
Resilience	Dimensional Stability (%)	
	Warp	0
	Weft	0
	Breaking Elongation	
	Warp	17
	Weft	27
	Breaking load (daN)	
	Warp	87
	Weft	110

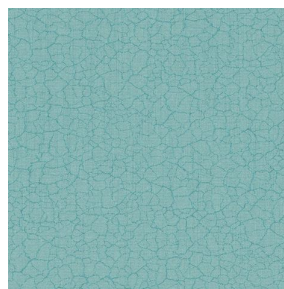
Print pattern TERRA



TERRA Ficelle 09



TERRA Taupe 95



TERRA Ecume 82



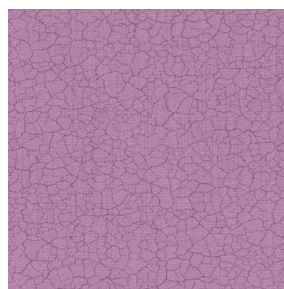
TERRA Rose 129



TERRA Fusain 71



TERRA Brun 23



TERRA Hortensia 134



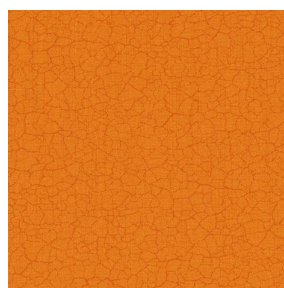
TERRA Naturel 26



TERRA Anis 62



TERRA Lagon 110



TERRA Citrouille 136



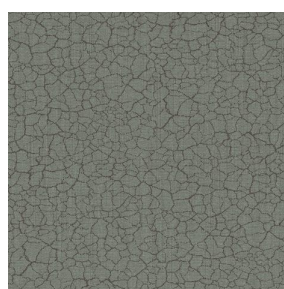
TERRA Pacifique 54



TERRA Chamois 111



TERRA Titanium 98



TERRA Graphite 77



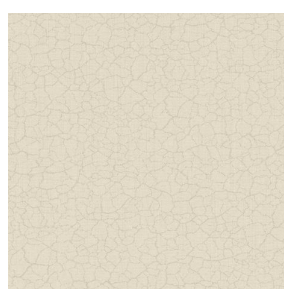
TERRA Gris 97



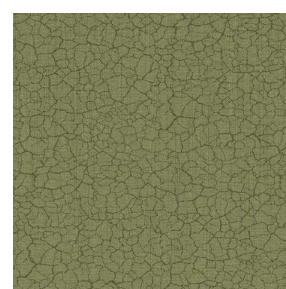
TERRA Ardoise 87



TERRA Violine 105



TERRA Chanvre 72



TERRA Argile 85



(Headquarters) SOTEXPRO - 510 route de Montchal - 42360 PANISSIÈRES - FRANCE - +33 4 77 27 60 60
(Showroom) Le LAB' SOTEXPRO - 4 rue du Mail - 75002 PARIS - FRANCE

Non-contractual photos and colors - Indicative fitting - Fitting may vary depending on support selected

Print pattern TERRA



TERRA Lin 11



TERRA Genêt 06



TERRA Ebene 113



TERRA Ocre 03



(Headquarters) SOTEXPRO - 510 route de Montchal - 42360 PANISSIÈRES - FRANCE - +33 4 77 27 60 60
(Showroom) Le LAB' SOTEXPRO - 4 rue du Mail - 75002 PARIS - FRANCE

Non-contractual photos and colors - Indicative fitting - Fitting may vary depending on support selected