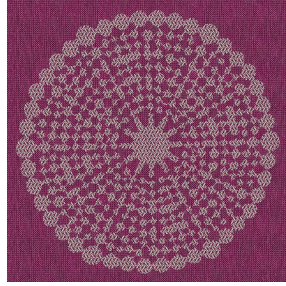




BELORA BPI 00
Printing support



ANGELE Prune 84
Print pattern



Printing support **BELORA BPI 00** Print pattern **ANGELE Prune 84**

Dimout support for digital printing. It does not have an M1 fire rating.

Technical properties



Flame retardant



Thermal



Acoustic

Applications Roman blinds - Panel curtains - Lining - Curtains

Composition 100% polyester

Weight 260 g/m²

Width 280 cm

Fabric direction Room High Direction

Fitting ↔ 30.0 cm ↓ 30.0 cm

Maintenance advice     

Label OEKO-TEX STANDARD 100

Minimum order 25 linear(s) meter(s)



Visual not taking into account the printing medium, the final rendering may vary according to the chosen medium.

Technical characteristics

Flame retardant	NF 12952	
Acoustic	Noise reduction coefficient (NRC) :	0.88
Resilience	Dimensional Stability (%)	
	Warp	0
	Weft	0
	Breaking Elongation	
	Warp	17
	Weft	27
	Breaking load (daN)	
	Warp	87
	Weft	110

Print pattern ANGELE



ANGELE Océan 91



ANGELE Taupe 95



ANGELE Anis 62



ANGELE Fuchsia 33



ANGELE Orange 15



ANGELE Sable 67



ANGELE Turquoise 53



ANGELE Vert 24



(Headquarters) SOTEXPRO - 510 route de Montchal - 42360 PANISSIÈRES - FRANCE - +33 4 77 27 60 60
(Showroom) Le LAB' SOTEXPRO - 4 rue du Mail - 75002 PARIS - FRANCE

Non-contractual photos and colors - Indicative fitting - Fitting may vary depending on support selected