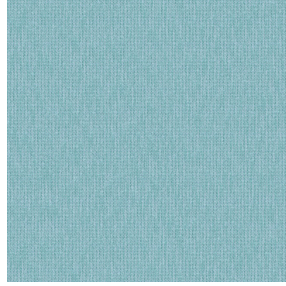




**BELORA BPI 00**  
Printing support



**CALI Etang 165**  
Print pattern

## Printing support **BELORA BPI 00** Print pattern **CALI Etang 165**

Dimout support for digital printing. It does not have an M1 fire rating.

### Technical properties



Flame retardant



Thermal



Acoustic

**Applications** Roman blinds - Panel curtains - Lining - Curtains

**Composition** 100% polyester

**Weight** 260 g/m<sup>2</sup>

**Width** 280 cm

**Fabric direction** Room High Direction

**Fitting** ↔ 33.0 cm ↓ 33.0 cm

**Maintenance advice**

**Label** OEKO-TEX STANDARD 100

**Minimum order** 25 linear(s) meter(s)



Visual not taking into account the printing medium, the final rendering may vary according to the chosen medium.

## Technical characteristics

Flame retardant	NF 12952	
Acoustic	Noise reduction coefficient (NRC) :	<b>0.88</b>
Resilience	Dimensional Stability (%)	
	Warp	<b>0</b>
	Weft	<b>0</b>
	Breaking Elongation	
	Warp	<b>17</b>
	Weft	<b>27</b>
	Breaking load (daN)	
	Warp	<b>87</b>
	Weft	<b>110</b>

## Print pattern CALI



CALI Orange 15



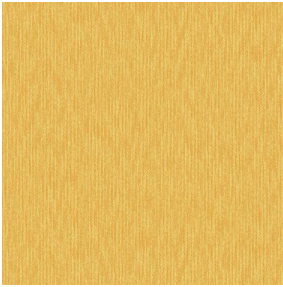
CALI Terracotta 65



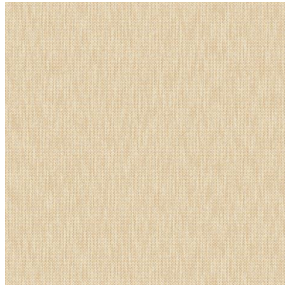
CALI Jade 116



CALI Lierre 24



CALI Soleil 127



CALI Naturel 26



(Headquarters) SOTEXPRO - 510 route de Montchal - 42360 PANISSIÈRES - FRANCE - +33 4 77 27 60 60  
(Showroom) Le LAB' SOTEXPRO - 4 rue du Mail - 75002 PARIS - FRANCE

Non-contractual photos and colors - Indicative fitting - Fitting may vary depending on support selected