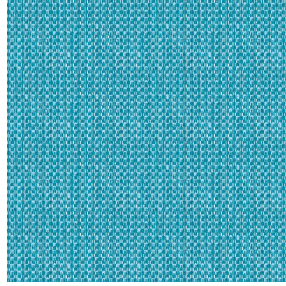




**BIOSAT BPI 00**  
Printing support



**RIVE Turquoise 53**  
Print pattern



Visual not taking into account the printing medium, the final rendering may vary according to the chosen medium.

## Printing support **BIOSAT BPI 00** Print pattern **RIVE Turquoise 53**

Combine aesthetics and well-being with high-tech fibres for antibacterial and antiviral action : kills 99% of bacteria (tested on staphylococcus aureus et klebsiella pneumoniae). BIOSAT was tested on 2 virus strains: the enveloped human coronavirus HCoV-229 (similar to Covid-19) and the non-enveloped Murine Norovirus (similar to the gastroenteritis virus). For the former, BIOSAT kills nearly 98% of the virus in less than 2 hours and for the latter, 73% in less than 2 hours. This fabric is proposed as a print medium.

### Technical properties



Flame retardant



Thermal



Antibacterial



Antiviral



Acoustic

**Applications** Roman blinds - Panel curtains - Curtains - Partition curtain

**Composition** polyester/polyester FR bioactive

**Weight** 135 g/m<sup>2</sup>

**Width** 280 cm

**Fabric direction** Room High Direction

**Fitting** ↔ 0.0 cm ↓ 0.0 cm

**Maintenance advice**     

**Label** France Terre Textile / OEKO-TEX STANDARD 100

**Minimum order** 25 linear(s) metter(s)

## Technical characteristics

|                 |   |              |
|-----------------|---|--------------|
| Flame retardant | M1 / B1 / IMO PASS / UNI 8456 / 9174 Classe Uno |              |
| Acoustic        | Noise reduction coefficient (NRC) : <b>0.72</b> |              |
| Antibacterial   | Yes   |              |
| Resilience      | Pilling   | <b>5</b>     |
|                 | Dimensional Stability (%)                       |              |
|                 | Warp  | <b>-0.5</b>  |
|                 | Weft  | <b>-0.5</b>  |
|                 | Martindale (Cycles)                             | <b>14000</b> |
|                 | Breaking Elongation                             |              |
|                 | Warp  | <b>43</b>    |
|                 | Weft  | <b>37</b>    |
|                 | Breaking load (daN)                             |              |
| Warp            | <b>42</b>                                       |              |
| Weft            | <b>129</b>                                      |              |

# Print pattern RIVE



RIVE Fuchsia 33



RIVE Bleu 41



RIVE Jaune 46



RIVE Océan 91



RIVE Sable 67



RIVE Taupe 95



RIVE Gris 97



(Headquarters) SOTEXPRO - 510 route de Montchal - 42360 PANISSIÈRES - FRANCE - +33 4 77 27 60 60  
(Showroom) Le LAB' SOTEXPRO - 4 rue du Mail - 75002 PARIS - FRANCE

*Non-contractual photos and colors - Indicative fitting - Fitting may vary depending on support selected*