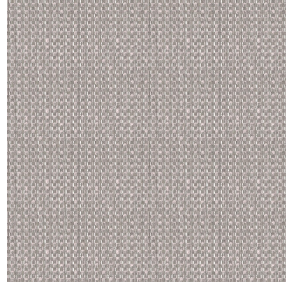




BIOSAT BPI 00
Printing support



RIVE Sable 67
Print pattern



Visual not taking into account the printing medium, the final rendering may vary according to the chosen medium.

Printing support BIOSAT BPI 00 Print pattern RIVE Sable 67

Combine aesthetics and well-being with high-tech fibres for antibacterial and antiviral action : kills 99% of bacteria (tested on staphylococcus aureus et klebsiella pneumoniae). BIOSAT was tested on 2 virus strains: the enveloped human coronavirus HCoV-229 (similar to Covid-19) and the non-enveloped Murine Norovirus (similar to the gastroenteritis virus). For the former, BIOSAT kills nearly 98% of the virus in less than 2 hours and for the latter, 73% in less than 2 hours. This fabric is proposed as a print medium.

Technical properties



Flame retardant



Thermal



Antibacterial



Antiviral



Acoustic

Applications Roman blinds - Panel curtains - Curtains - Partition curtain

Composition polyester/polyester FR bioactive

Weight 135 g/m²

Width 280 cm

Fabric direction Room High Direction

Fitting ↔ 0.0 cm ↓ 0.0 cm

Maintenance advice    

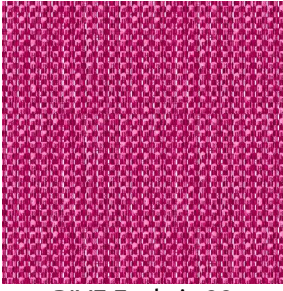
Label France Terre Textile / OEKO-TEX STANDARD 100

Minimum order 25 linear(s) metter(s)

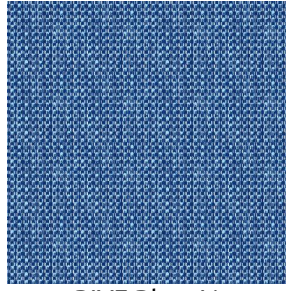
Technical characteristics

Flame retardant	M1 / B1 / IMO PASS / UNI 8456 / 9174 Classe Uno	
Acoustic	Noise reduction coefficient (NRC) : 0.72	
Antibacterial	Yes	
Resilience	Pilling	5
	Dimensional Stability (%)	
	Warp	-0.5
	Weft	-0.5
	Martindale (Cycles)	14000
	Breaking Elongation	
	Warp	43
	Weft	37
	Breaking load (daN)	
Warp	42	
Weft	129	

Print pattern RIVE



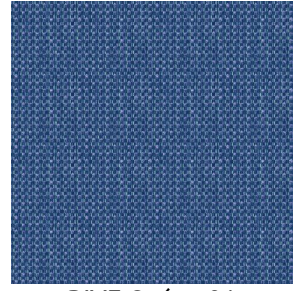
RIVE Fuchsia 33



RIVE Bleu 41



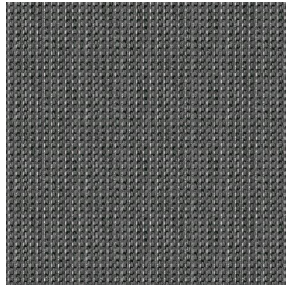
RIVE Jaune 46



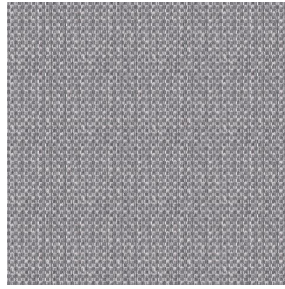
RIVE Océan 91



RIVE Turquoise 53



RIVE Taupe 95



RIVE Gris 97



(Headquarters) SOTEXPRO - 510 route de Montchal - 42360 PANISSIÈRES - FRANCE - +33 4 77 27 60 60
(Showroom) Le LAB' SOTEXPRO - 4 rue du Mail - 75002 PARIS - FRANCE

Non-contractual photos and colors - Indicative fitting - Fitting may vary depending on support selected