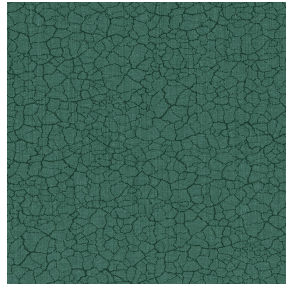




BIOSAT BPI 00
Printing support



TERRA Céladon 135
Print pattern



Visual not taking into account the printing medium, the final rendering may vary according to the chosen medium.

Printing support **BIOSAT BPI 00** Print pattern **TERRA Céladon 135**

Combine aesthetics and well-being with high-tech fibres for antibacterial and antiviral action : kills 99% of bacteria (tested on staphylococcus aureus et klebsiella pneumoniae). BIOSAT was tested on 2 virus strains: the enveloped human coronavirus HCoV-229 (similar to Covid-19) and the non-enveloped Murine Norovirus (similar to the gastroenteritis virus). For the former, BIOSAT kills nearly 98% of the virus in less than 2 hours and for the latter, 73% in less than 2 hours. This fabric is proposed as a print medium.

Technical properties



Flame retardant



Thermal



Antibacterial



Antiviral



Acoustic

Applications Roman blinds - Panel curtains - Curtains - Partition curtain

Composition polyester/polyester FR bioactive

Weight 135 g/m²

Width 280 cm

Fabric direction Room High Direction

Fitting ↔ 0.0 cm ↓ 0.0 cm

Maintenance advice    

Label France Terre Textile / OEKO-TEX STANDARD 100

Minimum order 25 linear(s) metter(s)

Technical characteristics

Flame retardant	M1 / B1 / IMO PASS / UNI 8456 / 9174 Classe Uno
Acoustic	Noise reduction coefficient (NRC) : 0.72
Antibacterial	Yes
Resilience	Pilling 5
	Dimensional Stability (%)
	Warp -0.5
	Weft -0.5
	Martindale (Cycles) 14000
	Breaking Elongation
	Warp 43
	Weft 37
Breaking load (daN)	Warp 42
	Weft 129

Print pattern TERRA



TERRA Ficelle 09



TERRA Taupe 95



TERRA Ecume 82



TERRA Rose 129



TERRA Fusain 71



TERRA Brun 23



TERRA Hortensia 134



TERRA Naturel 26



TERRA Anis 62



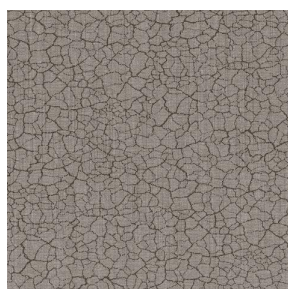
TERRA Lagon 110



TERRA Citrouille 136



TERRA Pacifique 54



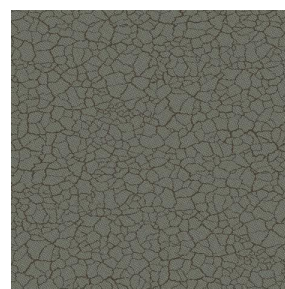
TERRA Chamois 111



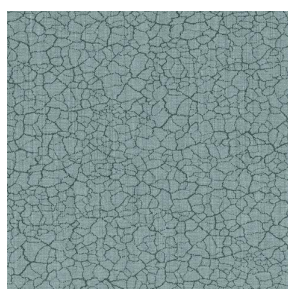
TERRA Titanium 98



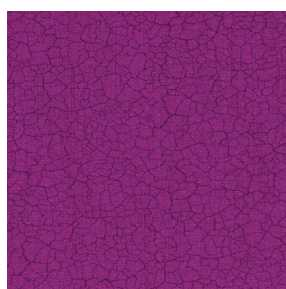
TERRA Graphite 77



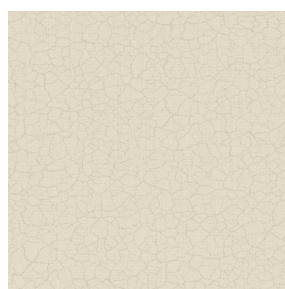
TERRA Gris 97



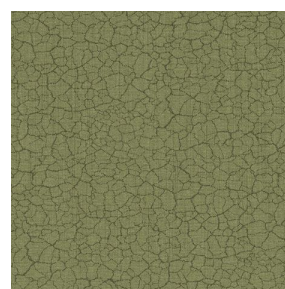
TERRA Ardoise 87



TERRA Violine 105



TERRA Chanvre 72



TERRA Argile 85



(Headquarters) SOTEXPRO - 510 route de Montchal - 42360 PANISSIÈRES - FRANCE - +33 4 77 27 60 60
(Showroom) Le LAB' SOTEXPRO - 4 rue du Mail - 75002 PARIS - FRANCE

Non-contractual photos and colors - Indicative fitting - Fitting may vary depending on support selected

Print pattern TERRA



TERRA Lin 11



TERRA Genêt 06



TERRA Ebene 113



TERRA Ocre 03



(Headquarters) SOTEXPRO - 510 route de Montchal - 42360 PANISSIÈRES - FRANCE - +33 4 77 27 60 60
(Showroom) Le LAB' SOTEXPRO - 4 rue du Mail - 75002 PARIS - FRANCE

Non-contractual photos and colors - Indicative fitting - Fitting may vary depending on support selected