



**BIOTAM BPI 00**  
Printing support



**FLOT Taupe 95**  
Print pattern



Visual not taking into account the printing medium, the final rendering may vary according to the chosen medium.

## Printing support **BIOTAM BPI 00** Print pattern **FLOT Taupe 95**

Combine aesthetics and well-being with high-tech fibres for antibacterial action. This fabric is proposed as a print medium.

### Technical properties



Flame retardant



Thermal



Antibacterial

**Applications** Roman blinds - Panel curtains - Curtains - Partition curtain

**Composition** polyester/polyester FR bioactive

**Weight** 170 g/m<sup>2</sup>

**Width** 280 cm

**Fabric direction** Room High Direction

**Fitting** ↔ 0.0 cm ↓ 0.0 cm

**Maintenance advice**     

**Label** France Terre Textile / OEKO-TEX STANDARD 100

**Minimum order** 25 linear(s) meter(s)

## Technical characteristics

Flame retardant

M1 / B1

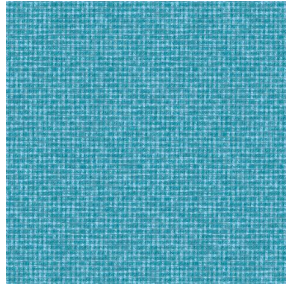
Antibacterial

Yes

# Print pattern FLOT



FLOT Sable 67



FLOT Turquoise 53



(Headquarters) SOTEXPRO - 510 route de Montchal - 42360 PANISSIÈRES - FRANCE - +33 4 77 27 60 60  
(Showroom) Le LAB' SOTEXPRO - 4 rue du Mail - 75002 PARIS - FRANCE

*Non-contractual photos and colors - Indicative fitting - Fitting may vary depending on support selected*