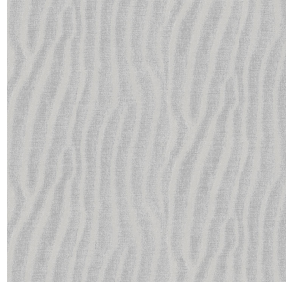




**BOREAL BPI 00**  
Printing support



**SABLE Souris 31**  
Print pattern



## Printing support **BOREAL BPI 00** Print pattern **SABLE Souris 31**

Dimout support for digital printing

### Technical properties



Flame retardant



Thermal



Acoustic

**Applications** Roman blinds - Valences - Lining - Bed runners - Curtains



**Composition** 100% FR polyester

**Weight** 260 g/m<sup>2</sup>

**Width** 145 cm

**Fabric direction** Standard Direction

**Fitting** ↔ 0.0 cm ↓ 0.0 cm

**Maintenance advice**     

**Label** OEKO-TEX STANDARD 100

**Minimum order** 25 linear(s) meter(s)



Visual not taking into account the printing medium, the final rendering may vary according to the chosen medium.

## Technical characteristics

|                 |   |           |
|-----------------|---|-----------|
| Flame retardant | M1 / B1 / IMO PASS / UNI 8456 / 9174 Classe Uno |           |
| Acoustic        | Noise reduction coefficient (NRC) : <b>0.88</b> |           |
| Resilience      | Dimensional Stability (%)                       |           |
|                 | Warp  | <b>0</b>  |
|                 | Weft  | <b>0</b>  |
|                 | Breaking Elongation                             |           |
|                 | Warp  | <b>17</b> |
|                 | Weft  | <b>27</b> |
|                 | Breaking load (daN)                             |           |
|                 | Warp  | <b>87</b> |
| Weft            | <b>110</b>                                      |           |

## Print pattern SABLE



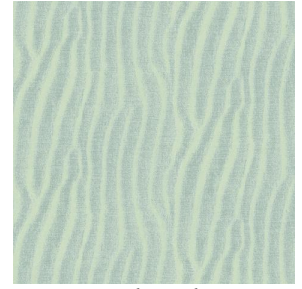
SABLE Lin 11



SABLE Rose 129



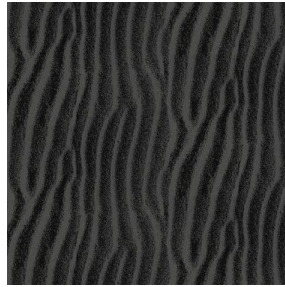
SABLE Sable 67



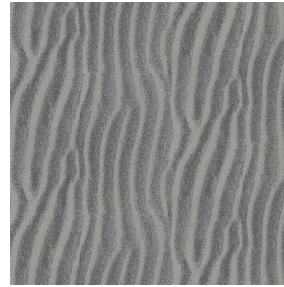
SABLE Absinthe 132



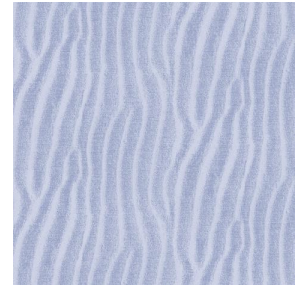
SABLE Ivoire 115



SABLE Noir 10



SABLE Gris 97



SABLE Jasmin 74



(Headquarters) SOTEXPRO - 510 route de Montchal - 42360 PANISSIÈRES - FRANCE - +33 4 77 27 60 60  
(Showroom) Le LAB' SOTEXPRO - 4 rue du Mail - 75002 PARIS - FRANCE

*Non-contractual photos and colors - Indicative fitting - Fitting may vary depending on support selected*