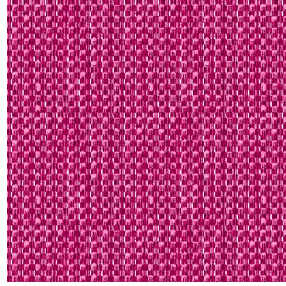




BOREAL BPI 00
Printing support



RIVE Fuchsia 33
Print pattern



Printing support **BOREAL BPI 00** Print pattern **RIVE Fuchsia 33**

Dimout support for digital printing

Technical properties



Flame retardant



Thermal



Acoustic

Applications Roman blinds - Valences - Lining - Bed runners - Curtains

Composition 100% FR polyester

Weight 260 g/m²

Width 145 cm

Fabric direction Standard Direction

Fitting ↔ cm ↓ cm

Maintenance advice     

Label OEKO-TEX STANDARD 100

Minimum order 25 linear(s) meter(s)

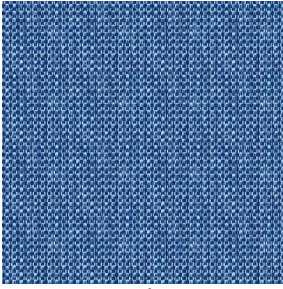


Visual not taking into account the printing medium, the final rendering may vary according to the chosen medium.

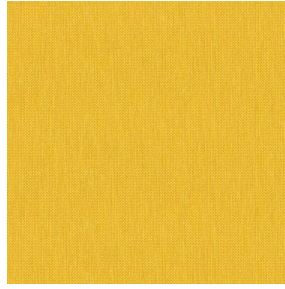
Technical characteristics

Flame retardant	M1 / B1 / IMO PASS / UNI 8456 / 9174 Classe Uno
Acoustic	Noise reduction coefficient (NRC) : 0.88
Resilience	Dimensional Stability (%)
	Warp 0 Weft 0
Resilience	Breaking Elongation
	Warp 17 Weft 27
Resilience	Breaking load (daN)
	Warp 87 Weft 110

Print pattern RIVE



RIVE Bleu 41



RIVE Jaune 46



RIVE Océan 91



RIVE Turquoise 53



RIVE Sable 67



RIVE Taupe 95



RIVE Gris 97



(Headquarters) SOTEXPRO - 510 route de Montchal - 42360 PANISSIÈRES - FRANCE - +33 4 77 27 60 60
(Showroom) Le LAB' SOTEXPRO - 4 rue du Mail - 75002 PARIS - FRANCE

Non-contractual photos and colors - Indicative fitting - Fitting may vary depending on support selected