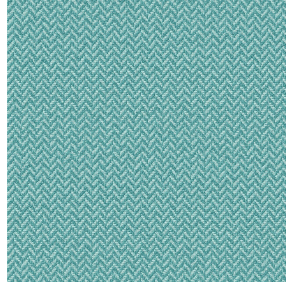




**BOREAL BPI 00**  
Printing support



**SCOURTIN Pacifique 54**  
Print pattern



Visual not taking into account the printing medium, the final rendering may vary according to the chosen medium.

# Printing support **BOREAL BPI 00** Print pattern **SCOURTIN Pacifique 54**

Dimout support for digital printing

## Technical properties



Flame retardant



Thermal



Acoustic

**Applications** Roman blinds - Valences - Lining - Bed runners - Curtains

**Composition** 100% FR polyester

**Weight** 260 g/m<sup>2</sup>

**Width** 145 cm

**Fabric direction** Standard Direction

**Fitting** ↔ cm ↓ cm

**Maintenance advice**

**Label** OEKO-TEX STANDARD 100

**Minimum order** 25 linear(s) meter(s)

## Technical characteristics

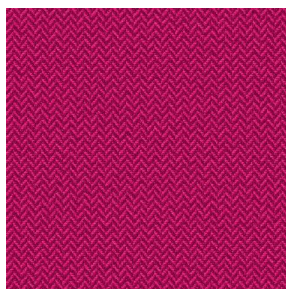
Flame retardant	M1 / B1 / IMO PASS / UNI 8456 / 9174 Classe Uno	
Acoustic	Noise reduction coefficient (NRC) : <b>0.88</b>	
Resilience	Dimensional Stability (%)	
	Warp	<b>0</b>
	Weft	<b>0</b>
	Breaking Elongation	
	Warp	<b>17</b>
	Weft	<b>27</b>
	Breaking load (daN)	
	Warp	<b>87</b>
Weft	<b>110</b>	



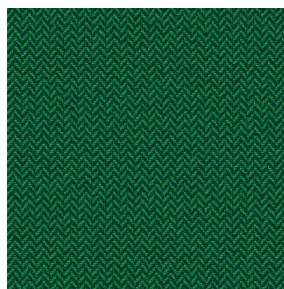
# Print pattern SCOURTIN



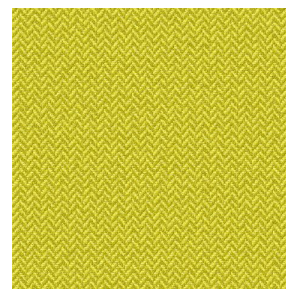
SCOURTIN Beige 63



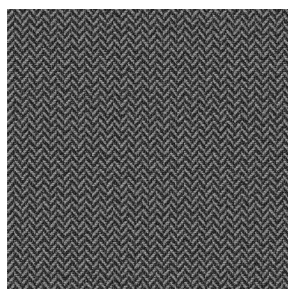
SCOURTIN Fuchsia 33



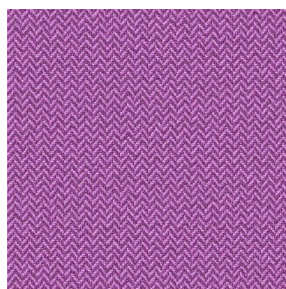
SCOURTIN Sapin 126



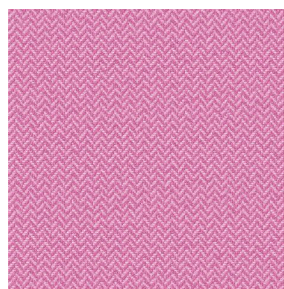
SCOURTIN Bergamote  
121



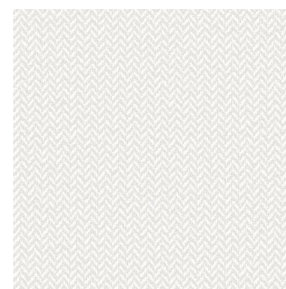
SCOURTIN Anthracite  
38



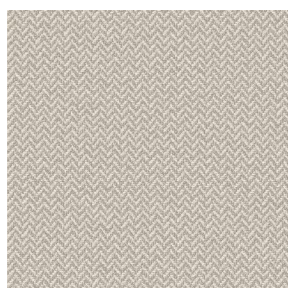
SCOURTIN Violette 105



SCOURTIN Rose 129



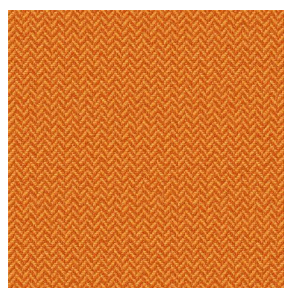
SCOURTIN Blanc 01



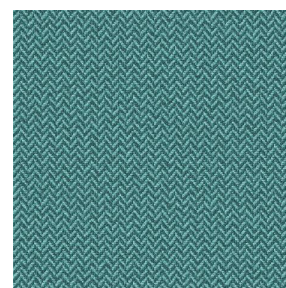
SCOURTIN Lin 11



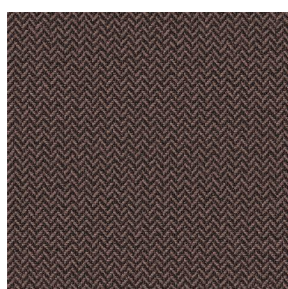
SCOURTIN Naturel 26



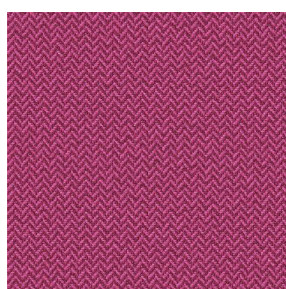
SCOURTIN Citrouille  
136



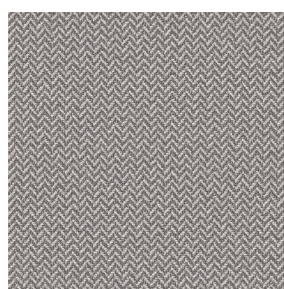
SCOURTIN Turquoise 53



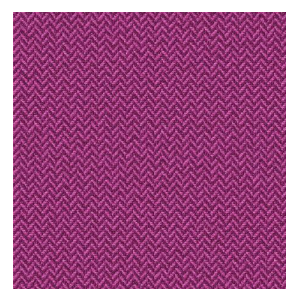
SCOURTIN Brun 23



SCOURTIN Hortensia  
134



SCOURTIN Orage 123



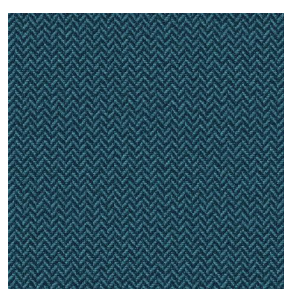
SCOURTIN Rubis 59



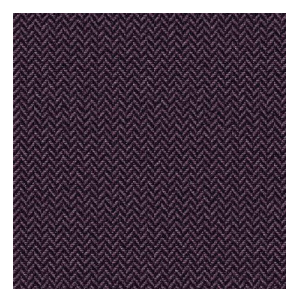
SCOURTIN Ficelle 09



SCOURTIN Maïs 37



SCOURTIN Céladon 135



SCOURTIN Ebene 113



(Headquarters) SOTEXPRO - 510 route de Montchal - 42360 PANISSIÈRES - FRANCE - +33 4 77 27 60 60  
(Showroom) Le LAB' SOTEXPRO - 4 rue du Mail - 75002 PARIS - FRANCE

Non-contractual photos and colors - Indicative fitting - Fitting may vary depending on support selected



## Print pattern SCOURTIN



SCOURTIN Tourterelle  
138



SCOURTIN Titanium 98



SCOURTIN Lagon 110



SCOURTIN Gris 97



(Headquarters) SOTEXPRO - 510 route de Montchal - 42360 PANISSIÈRES - FRANCE - +33 4 77 27 60 60  
(Showroom) Le LAB' SOTEXPRO - 4 rue du Mail - 75002 PARIS - FRANCE

Non-contractual photos and colors - Indicative fitting - Fitting may vary depending on support selected