



**BOREAL BPI 00**  
Printing support



**FLOT Sable 67**  
Print pattern



Visual not taking into account the printing medium, the final rendering may vary according to the chosen medium.

## Printing support **BOREAL BPI 00** Print pattern **FLOT Sable 67**

Dimout support for digital printing

### Technical properties



Flame retardant



Thermal



Acoustic

**Applications** Roman blinds - Valences - Lining - Bed runners - Curtains

**Composition** 100% FR polyester

**Weight** 260 g/m<sup>2</sup>

**Width** 145 cm

**Fabric direction** Standard Direction

**Fitting** ↔ 0.0 cm ↓ 0.0 cm

**Maintenance advice**     

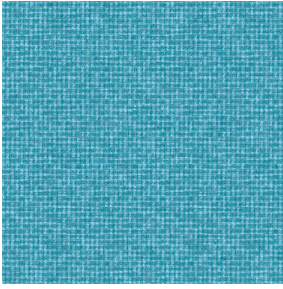
**Label** OEKO-TEX STANDARD 100

**Minimum order** 25 linear(s) meter(s)

## Technical characteristics

Flame retardant	M1 / B1 / IMO PASS / UNI 8456 / 9174 Classe Uno
Acoustic	Noise reduction coefficient (NRC) : <b>0.88</b>
Resilience	Dimensional Stability (%)
	Warp <b>0</b>
	Weft <b>0</b>
	Breaking Elongation
	Warp <b>17</b>
	Weft <b>27</b>
	Breaking load (daN)
	Warp <b>87</b>
	Weft <b>110</b>

# Print pattern FLOT



FLOT Turquoise 53



FLOT Taupe 95



(Headquarters) SOTEXPRO - 510 route de Montchal - 42360 PANISSIÈRES - FRANCE - +33 4 77 27 60 60  
(Showroom) Le LAB' SOTEXPRO - 4 rue du Mail - 75002 PARIS - FRANCE

Non-contractual photos and colors - Indicative fitting - Fitting may vary depending on support selected