



BOREAL BPI 00
Printing support



MELODY Anis 62
Print pattern



Printing support **BOREAL BPI 00** Print pattern **MELODY Anis 62**

Dimout support for digital printing

Technical properties



Flame retardant



Thermal



Acoustic

Applications Roman blinds - Valences - Lining - Bed runners - Curtains

Composition 100% FR polyester

Weight 260 g/m²

Width 145 cm

Fabric direction Standard Direction

Fitting ↔ 0.0 cm ↓ 0.0 cm

Maintenance advice     

Label OEKO-TEX STANDARD 100

Minimum order 25 linear(s) meter(s)



Visual not taking into account the printing medium, the final rendering may vary according to the chosen medium.

Technical characteristics

| | |
|-----------------|---|
| Flame retardant | M1 / B1 / IMO PASS / UNI 8456 / 9174 Classe Uno |
| Acoustic | Noise reduction coefficient (NRC) : 0.88 |
| Resilience | Dimensional Stability (%) |
| | Warp 0 Weft 0 |
| Resilience | Breaking Elongation |
| | Warp 17 Weft 27 |
| Resilience | Breaking load (daN) |
| | Warp 87 Weft 110 |

Print pattern MELODY



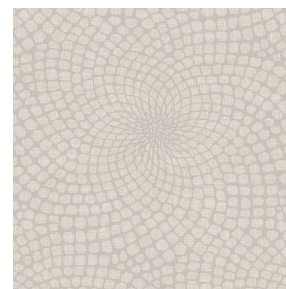
MELODY Vanille 51



MELODY Fuchsia 33



MELODY Naturel 26



MELODY Lin 11



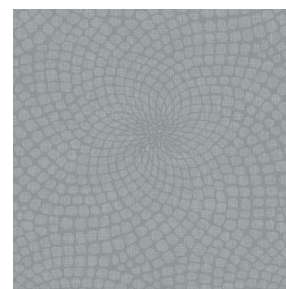
MELODY Orange 15



MELODY Ficelle 09



MELODY Turquoise 53



MELODY Acier 18



(Headquarters) SOTEXPRO - 510 route de Montchal - 42360 PANISSIÈRES - FRANCE - +33 4 77 27 60 60
(Showroom) Le LAB' SOTEXPRO - 4 rue du Mail - 75002 PARIS - FRANCE

Non-contractual photos and colors - Indicative fitting - Fitting may vary depending on support selected