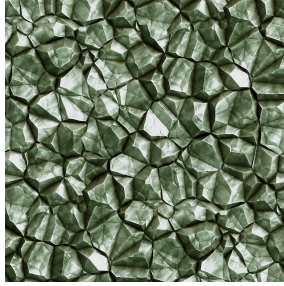




BOREAL BPI 00
Printing support



SAPHIR Absinthe 132
Print pattern



Printing support **BOREAL BPI 00** Print pattern **SAPHIR Absinthe 132**

Dimout support for digital printing

Technical properties



Flame retardant



Thermal



Acoustic

Applications Roman blinds - Valences - Lining - Bed runners - Curtains

Composition 100% FR polyester

Weight 260 g/m²

Width 145 cm

Fabric direction Standard Direction

Fitting ↔ 0.0 cm ↓ 0.0 cm

Maintenance advice     

Label OEKO-TEX STANDARD 100

Minimum order 25 linear(s) meter(s)



Visual not taking into account the printing medium, the final rendering may vary according to the chosen medium.

Technical characteristics

| | | |
|---------------------|---|------------|
| Flame retardant | M1 / B1 / IMO PASS / UNI 8456 / 9174 Classe Uno | |
| Acoustic | Noise reduction coefficient (NRC) : 0.88 | |
| Resilience | Dimensional Stability (%) | |
| | Warp | 0 |
| | Weft | 0 |
| | Breaking Elongation | |
| | Warp | 17 |
| | Weft | 27 |
| Breaking load (daN) | Warp | 87 |
| | Weft | 110 |

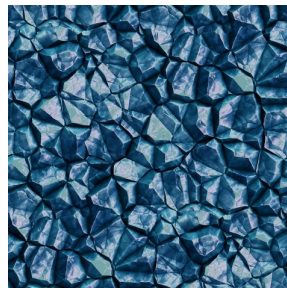
Print pattern SAPHIR



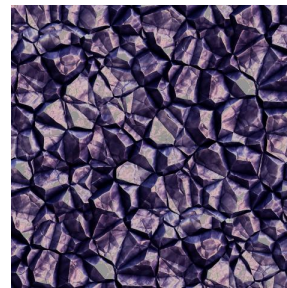
SAPHIR Naturel 26



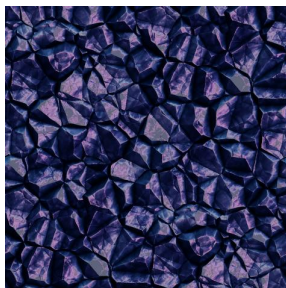
SAPHIR Violine 105



SAPHIR Gentiane 16



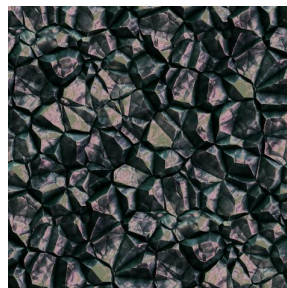
SAPHIR Aubergine 27



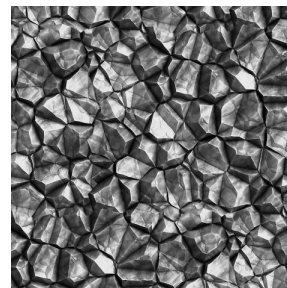
SAPHIR Opéra 104



SAPHIR Hortensia 134



SAPHIR Reflet 140



SAPHIR Acier 18



(Headquarters) SOTEXPRO - 510 route de Montchal - 42360 PANISSIÈRES - FRANCE - +33 4 77 27 60 60
(Showroom) Le LAB' SOTEXPRO - 4 rue du Mail - 75002 PARIS - FRANCE

Non-contractual photos and colors - Indicative fitting - Fitting may vary depending on support selected