



**BOREAL BPI 00**  
Printing support



**FLOT Turquoise 53**  
Print pattern



# Printing support **BOREAL BPI 00** Print pattern **FLOT Turquoise 53**

Dimout support for digital printing

## Technical properties



Flame retardant



Thermal



Acoustic

**Applications** Lining - Bed runners - Curtains - Roman blinds - Valences

**Composition** 100% FR polyester

**Weight** 260 g/m<sup>2</sup>

**Width** 280 cm

**Fabric direction** Room High Direction

**Fitting** ↔ 0.0 cm ↓ 0.0 cm

**Maintenance advice**     

**Label** OEKO-TEX STANDARD 100

**Minimum order** 25 linear(s) meter(s)

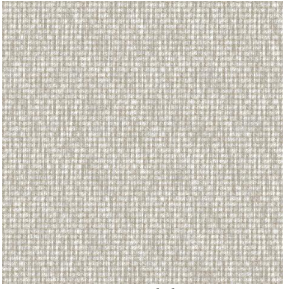


Visual not taking into account the printing medium, the final rendering may vary according to the chosen medium.

## Technical characteristics

Flame retardant	M1 / B1 / IMO PASS / UNI 8456 / 9174 Classe Uno	
Acoustic	Noise reduction coefficient (NRC) : <b>0.88</b>	
Resilience	Dimensional Stability (%)	
	Warp	<b>0</b>
	Weft	<b>0</b>
	Breaking Elongation	
	Warp	<b>17</b>
	Weft	<b>27</b>
Breaking load (daN)	Warp	<b>87</b>
	Weft	<b>110</b>

# Print pattern FLOT



FLOT Sable 67



FLOT Taupe 95



(Headquarters) SOTEXPRO - 510 route de Montchal - 42360 PANISSIÈRES - FRANCE - +33 4 77 27 60 60  
(Showroom) Le LAB' SOTEXPRO - 4 rue du Mail - 75002 PARIS - FRANCE

Non-contractual photos and colors - Indicative fitting - Fitting may vary depending on support selected