



BOREAL BPI 00
Printing support



GONIDIE Citrouille 136
Print pattern



Printing support **BOREAL BPI 00** Print pattern **GONIDIE Citrouille 136**

Dimout support for digital printing

Technical properties



Flame retardant



Thermal



Acoustic

Applications Roman blinds - Valences - Lining - Bed runners - Curtains

Composition 100% FR polyester

Weight 260 g/m²

Width 280 cm

Fabric direction Room High Direction

Fitting ↔ 0.0 cm ↓ 0.0 cm

Maintenance advice     

Label OEKO-TEX STANDARD 100

Minimum order 25 linear(s) meter(s)



Visual not taking into account the printing medium, the final rendering may vary according to the chosen medium.

Technical characteristics

Flame retardant	M1 / B1 / IMO PASS / UNI 8456 / 9174 Classe Uno	
Acoustic	Noise reduction coefficient (NRC) : 0.88	
Resilience	Dimensional Stability (%)	
	Warp	0
	Weft	0
	Breaking Elongation	
	Warp	17
	Weft	27
Breaking load (daN)	Warp	87
	Weft	110

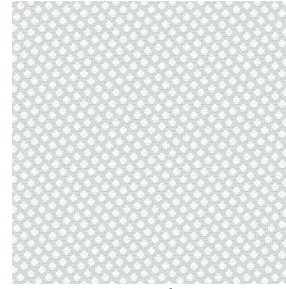
Print pattern GONIDIE



GONIDIE Souris 31



GONIDIE Beige 63



GONIDIE Glacier 43



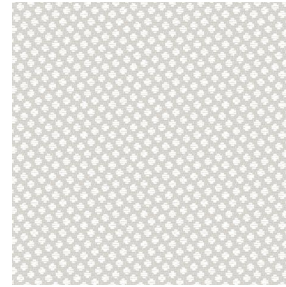
GONIDIE Noir 10



GONIDIE Céladon 135



GONIDIE Anis 62



GONIDIE Perle 96



GONIDIE Mousse 92



GONIDIE Tourterelle
138



GONIDIE Brique 42



GONIDIE Opéra 104



GONIDIE Pacifique 54



GONIDIE Brun 23



GONIDIE Crème 32



GONIDIE Taupe 95



GONIDIE Lin 11



GONIDIE Lierre 124



GONIDIE Bergamote
121



GONIDIE Hortensia 134



GONIDIE Vieux rose 64



(Headquarters) SOTEXPRO - 510 route de Montchal - 42360 PANISSIÈRES - FRANCE - +33 4 77 27 60 60
(Showroom) Le LAB' SOTEXPRO - 4 rue du Mail - 75002 PARIS - FRANCE

Non-contractual photos and colors - Indicative fitting - Fitting may vary depending on support selected

Print pattern GONIDIE



GONIDIE Emeraude 88



GONIDIE Fuchsia 33



GONIDIE Ebene 113



GONIDIE Ficelle 09



(Headquarters) SOTEXPRO - 510 route de Montchal - 42360 PANISSIÈRES - FRANCE - +33 4 77 27 60 60
(Showroom) Le LAB' SOTEXPRO - 4 rue du Mail - 75002 PARIS - FRANCE

Non-contractual photos and colors - Indicative fitting - Fitting may vary depending on support selected