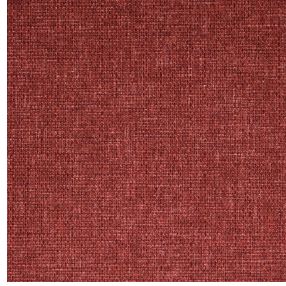




BOREAL BPI 00
Printing support



MUNA Rouge 21
Print pattern



Printing support **BOREAL BPI 00** Print pattern **MUNA Rouge 21**

Dimout support for digital printing

Technical properties



Flame retardant



Thermal



Acoustic

Applications Roman blinds - Valences - Lining - Bed runners - Curtains

Composition 100% FR polyester

Weight 260 g/m²

Width 280 cm

Fabric direction Room High Direction

Fitting ↔ cm ↓ cm

Maintenance advice

Label OEKO-TEX STANDARD 100

Minimum order 25 linear(s) meter(s)



Visual not taking into account the printing medium, the final rendering may vary according to the chosen medium.

Technical characteristics

Flame retardant	M1 / B1 / IMO PASS / UNI 8456 / 9174 Classe Uno	
Acoustic	Noise reduction coefficient (NRC) : 0.88	
Resilience	Dimensional Stability (%)	
	Warp	0
	Weft	0
	Breaking Elongation	
	Warp	17
	Weft	27
Breaking load (daN)	Warp	87
	Weft	110

Print pattern MUNA



MUNA Cactus 36



MUNA soleil 90



MUNA gris 97



MUNA lin 11



MUNA Melon 22



MUNA souris 31



MUNA lagon 110



MUNA jade 116



MUNA terre 107



MUNA céladon 135



MUNA Coco 142



MUNA Sable 67



MUNA Saumon 143



MUNA Sisal 140



MUNA Tourterelle 138



MUNA Ardoise 87



MUNA Tilleul 103



MUNA Chanvre 72



MUNA Graphite 77



MUNA Olive 61



(Headquarters) SOTEXPRO - 510 route de Montchal - 42360 PANISSIÈRES - FRANCE - +33 4 77 27 60 60
(Showroom) Le LAB' SOTEXPRO - 4 rue du Mail - 75002 PARIS - FRANCE

Non-contractual photos and colors - Indicative fitting - Fitting may vary depending on support selected

Print pattern MUNA



MUNA Lierre 124



MUNA Indigo 144



MUNA Sienne 29



MUNA Saphir 106



MUNA Violine 105



MUNA Titanium 98



MUNA Acier 18



(Headquarters) SOTEXPRO - 510 route de Montchal - 42360 PANISSIÈRES - FRANCE - +33 4 77 27 60 60
(Showroom) Le LAB' SOTEXPRO - 4 rue du Mail - 75002 PARIS - FRANCE

Non-contractual photos and colors - Indicative fitting - Fitting may vary depending on support selected